

## COMBO STEEL

2 x 2W Crisp White LED heads  
 6VDC 36W Battery Capacity  
 Over 4 hours Duration Standalone Unit



**Approvals:**  
 CSA Certified to C22.2 #141, C860

### DESCRIPTION

The commercial CSRP-2L series combines a steel sign and a battery unit featuring a slim profile that prevents light leaks. Combined with a simple easy to install design, the two small style PAR18 heads contain 2W crisp white LEDs.

Available in 6VDC, the CSRP-2L has over 4 hours duration as a standalone unit and the LED lamps have a limited lifetime warranty.

### CIRCUITRY

- 120/347V AC input, field selectable
- 1.9W power consumption on AC input for LED exit portion of combination sign
- LED Emergency DC wattages as follows: 6VDC = 0.9W
- 6VDC emergency power output versions (as specified)
- Wattage capacity: 36W
- Over 4 hours duration standalone unit
- Momentary push button test switch
- Pilot LED for AC ON and CHARGE
- Fully automatic, current limited charger
- Solid state design and construction
- Brownout and short circuit protection
- Temperature compensated
- Maintenance free, sealed lead acid battery

### MECHANICAL

- 20 Gauge steel construction
- Slide out faceplates and backplates for rapid and simple installation
- Universal spider knockout pattern stamped into backplate for junction box mounting
- Universal models include ceiling or end mount, field installable canopy kit c/w spider plate
- Front head mounting is standard
- Multiple conduit entry knockouts
- White powder coat finish standard
- PAR18 small style, high impact thermoplastic heads
- 2 Phare 2W crisp white LED heads
- LED heads with limited lifetime warranty\*

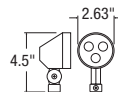
### ORDERING GUIDE

<b>CSRP-2L</b>
<b>Series</b>
<b>CSRP-2L</b>

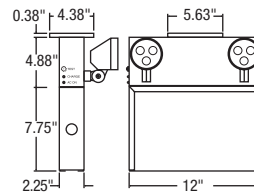
\* For complete warranty details, please see our terms and conditions in our website



### DIMENSIONS



Type N - PAR18  
 Thermoplastic



Comes standard with three pictogram legends for direction selection.

### MODEL RATING

Model	Voltage	Wattage capacity			
		30 min.	60 min.	90 min.	120 min.
<b>CSRP-2L</b>	6V	36	18	12	9