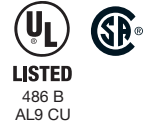


# ALUMINUM SOLDERLESS LUGS • TYPE LA

One hole, front entrance copper or aluminum conductors  
 600 Volt Rated



Body, fabricated from high strength aluminum alloy extrusion.

Lug is 100% reusable using either screw driver or hex wrench. No special tools required.

Maximum conductivity, compact design light weight with ultimate strength.

Finish, electro-tin plated to assure minimum contact resistance and protection against corrosion when used with copper wire. (For added protection apply Penn-Union Cual-Aid® to cable before installation.)

Standard stud hole sizes and locations are shown on chart.

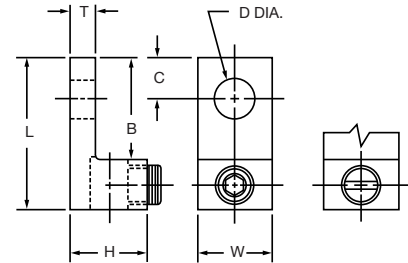


FIG. 2

FIG. 1

Part #	Wire Range	Fig. No.	Approximate Dimensions						
			L in	W in	H in	T in	B in	C in	D Dia. in
LA6	14-6	1	1 1/16	1/2	1/2	3/32	1 1/16	1/4	17/64
LA2	14-2	1	1 5/32	1/2	35/64	7/64	1 1/16	5/16	17/64
LA0	14-1/0	2	1 15/32	5/8	25/32	3/16	27/32	27/64	17/64
LA2/0	14-2/0	2	1 15/32	5/8	51/64	3/16	27/32	7/16	17/64
LA250	6-250	2	2	1	1 1/8	1/4	1	29/64	21/64
LA350	6-350	2	2 1/4	1 1/8	1 1/4	1/4	1 1/8	1/2	13/32
LA500	4-500	2	2 13/16	1 1/2	1 9/16	5/16	1 9/16	7/8	13/32
LA600	2-600	2	3 3/16	1 1/2	1 9/16	7/16	1 13/16	25/32	13/32
LA800	300-800	2	3 1/2	1 3/4	1 15/16	1/2	1 7/8	13/16	21/32
LA1000	500-1000	2	3 1/2	1 3/4	1 15/16	1/2	1 7/8	13/16	21/32

F

# ALUMINUM LAY-IN LUGS • TYPE LI

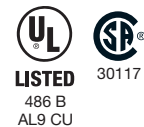
One hole, side entrance copper or aluminum continuous conductors



Body, fabricated from high strength aluminum alloy extrusion.

Finish, electro-tin plated to assure minimum contact resistance and protection against corrosion when used with copper wire. (For added protection apply Penn-Union Corp. Cual-Aid® to cable before installation.)

The side entrance design permits the quick installation of one continuous conductor as a jumper to multiple locations without a break in the conductor. Excellent choice for use on grounding conductors.



Part #	Wire Diameter Range	Approximate Dimensions			Screw Type
		L	W	H	
LI50S	14-4	1 1/16"	3/8"	25/32"	Slot
LI112S	14-1/0	1 1/2"	19/32"	1 11/64"	Slot
LI200S	6-3/0	2"	51/64"	1 9/16"	Socket
LI252S	6-250	2 13/64"	51/64"	1 51/64"	Socket