

# 3- 1/2 INCH RETROFIT HOUSING IC RATED

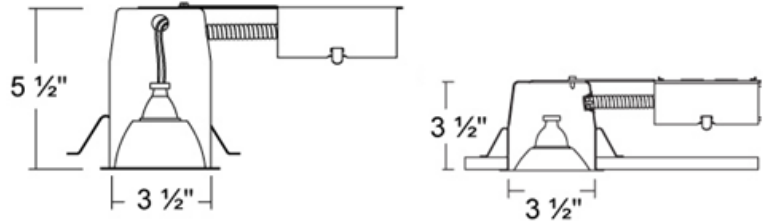


## 3 1/2 H-SERIES RETRO HOUSINGS

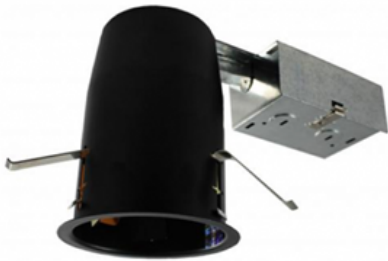
SPECIFICATION GRADE PRODUCT

DIMENSIONS

Both Housings Are:  
Designed, tested, and approved  
specifically to exceed  
ASTM E-283 testing methods.



### TALL IC RETRO-FIT



**120**  
VOLTS



ACCEPTS GU10 LED BULB

#### H350LGRICQA-TALL RETROFIT

E-Volt 3-1/2" IC AT Remodel Housing  
GU10 LED Lamp 120V Max 10W

#### SPECIFICATIONS

HOUSING HEIGHT: 5 1/2"  
HOUSING WIDTH: 4 5/8"  
OVERALL LENGTH: 10 1/2"  
120V 10Watt GU10 LED Lamp

#### CUT OUT

**H350LGRICQA: 3 5/8"**

### SHALLOW IC RETRO-FIT



**120**  
VOLTS



ACCEPTS GU10 LED BULB

#### H350LGSRICQA-SHORT RETROFIT

E-Volt 3-1/2" IC AT Remodel Housing  
GU10 LED Lamp 120V Max 10W

#### SPECIFICATIONS

HOUSING HEIGHT: 3 1/2"  
HOUSING WIDTH: 4 5/8"  
OVERALL LENGTH: 10 1/2"  
120V 10Watt GU10 LED Lamp

#### CUT OUT

**H350LGSRICQA: 3 5/8"**

Catalog #		Type
Project		
Comments		Date
Prepared by		



Maximum Rated for:  
120 Volt 10-Watt GU10

