

# 3 1/2 INCH HOUSING NEW CONST IC RATED

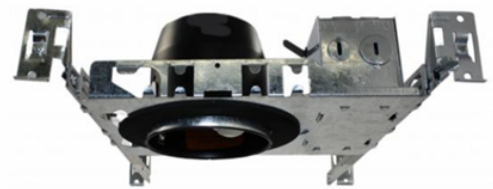
## 3-1/2 H-SERIES LED HOUSINGS

SPECIFICATION GRADE PRODUCT



### Tall Housing

### Shallow Housing



120

VOLTS



ACCEPTS GU10 LED BULB

#### H350LGICQA-TALL HOUSING

E-Volt 3-1/2" IC AT New Construction Housing GU10 LED Lamp 120V Max 10W

#### SPECIFICATIONS

HOUSING HEIGHT: 5"  
 FRAME WIDTH: 6 1/2" FRAME LENGTH: 9"  
 120V 10Watt GU10 LED Lamp

#### CUT OUT

H350LGICQA: 3 5/8"

Both Housings Are:  
 Designed, tested, and approved specifically to exceed ASTM E-283 testing methods.

120

VOLTS



ACCEPTS GU10 LED BULB

#### H350LGSICQA-SHALLOW HOUSING

E-Volt 3-1/2" IC AT Shallow Housing GU10 LED Lamp 120V Max 10W

#### SPECIFICATIONS

HOUSING HEIGHT: 3"  
 FRAME WIDTH: 6 1/2" FRAME LENGTH: 9"  
 120V 10 Watt GU10 LED Lamp

#### CUT OUT

H350LGSICQA: 3 5/8"

Catalog #		Type
Project		
Comments		Date
Prepared by		



Maximum Rated for:  
 120 Volt 10-Watt GU10

