

3 1/2 INCH HOUSING NEW CONST IC RATED

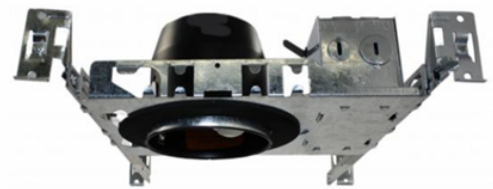
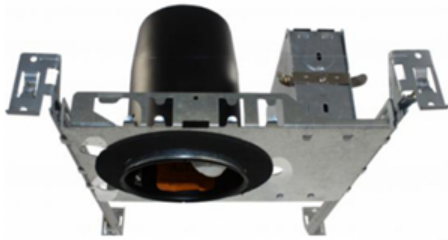
3-1/2 H-SERIES LED HOUSINGS

SPECIFICATION GRADE PRODUCT



Tall Housing

Shallow Housing



120

VOLTS



ACCEPTS GU10 LED BULB

H350LGICQA-TALL HOUSING

E-Volt 3-1/2" IC AT New Construction
Housing GU10 LED Lamp 120V Max 10W

SPECIFICATIONS

HOUSING HEIGHT: 5"
FRAME WIDTH: 6 1/2" FRAME
LENGTH: 9"
120V 10Watt GU10 LED Lamp

CUT OUT

H350LGICQA: 3 5/8"

Both Housings Are:
Designed, tested, and approved
specifically to exceed
ASTM E-283 testing methods.

120

VOLTS



ACCEPTS GU10 LED BULB

H350LGSICQA-SHALLOW HOUSING

E-Volt 3-1/2" IC AT Shallow Housing
GU10 LED Lamp 120V Max 10W

SPECIFICATIONS

HOUSING HEIGHT: 3"
FRAME WIDTH: 6 1/2" FRAME
LENGTH: 9"
120V 10 Watt GU10 LED Lamp

CUT OUT

H350LGSICQA: 3 5/8"

Catalog #		Type
Project		
Comments		Date
Prepared by		



Maximum Rated for:
120 Volt 10-Watt GU10

