

Product: \_\_\_\_\_

Type: \_\_\_\_\_

Project: \_\_\_\_\_

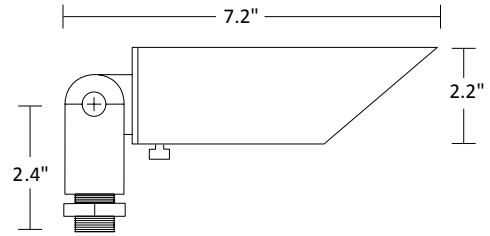
## BSB060 Straight Bullet

Architectural Aluminum

### Fixture Ordering Guide

| Product Code | Finish               |
|--------------|----------------------|
| BSB060       | TB - Textured Black  |
|              | TZ - Textured Bronze |

Order Lamp Separately



### Shroud:

- Textured Black or Textured Bronze
- UV resistant powder coat protects the finish from salt-spray induced corrosion
- Brass slotted thumb screw for easy, tool-free lamp replacement

### Housing:

- Architectural-grade die cast aluminum base, knuckle and shroud
- Fully adjustable swivel arm with locking teeth maintains desired angles
- Two silicone o-rings provide a low-friction, watertight seal
- Gasketed knuckle to prevent water intrusion

### Lens:

- Shock and heat-resistant clear, tempered glass

### Socket:

- Ceramic GU5.3 bi-pin socket
- Stainless steel retention clip ensures secure lamp seating and protects the lamp from shock and vibration
- Heat-resistant wire leads

### Lamp:

- MR16 – 50W maximum

### Mounting:

- 8" black ground stake included

### Electrical:

- 12 Volt system
- Pre-wired with 36", 18-2 lead wire
- Two King® DryConn™ waterproof connectors included

### Certifications:

- ETL Listed to UL Standard 1838 and CSA C22.2 No. 250.7

### Fasteners:

- All fasteners are corrosion-resistant stainless steel

### Warranty:

- Backed by a 5-year limited warranty to be free from defects in material and/or workmanship
- ProLED® MR16 lamps installed in Sollos fixtures per installation instructions are backed by a 20-year limited warranty

### Photometrics:

