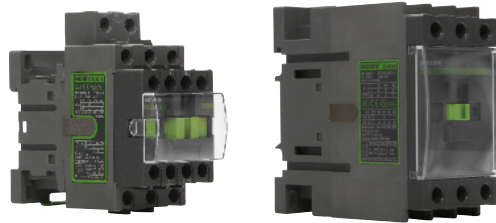


## IEC Contactors

### Ex9C 9-1000 Amperes Standard

- Built-in auxiliary contacts; 1NO/1NC additional auxiliary contacts are front or side mounted
- Non-Reversing



**Certifications**  
 IEC/EN 60947-1, 60947-4-1  
 UL 60947-1, 60947-4-1

CE      cUL US LISTED  
 CCC

Rated Amperage (A)	Wide Range Electronic Coil (with built-in surge suppression)					
	120 Vac Coil Catalog Number	24-60 Vac/dc Coil Catalog Number	48-130 Vac/dc Coil Catalog Number	100-250 Vac/dc Coil Catalog Number	250-500 Vac/dc Coil Catalog Number	
<b>Power Poles - 3NO Auxiliary Contact - 1NO+1NC</b>						
3-Pole	9	Ex9C0911G7	Ex9C09F11J	Ex9C09F11H	Ex9C09F11K	-
	12	Ex9C1211G7	Ex9C12F11J	Ex9C12F11H	Ex9C12F11K	-
	18	Ex9C1811G7	Ex9C18F11J	Ex9C18F11H	Ex9C18F11K	-
	25	Ex9C2511G7	Ex9C25F11J	Ex9C25F11H	Ex9C25F11K	-
	32	Ex9C3211G7	Ex9C32F11J	Ex9C32F11H	Ex9C32F11K	-
	38	Ex9C3811G7	Ex9C38F11J	Ex9C38F11H	Ex9C38F11K	-
	40	Ex9C4011G7	Ex9C40F11J	Ex9C40F11H	Ex9C40F11K	-
	50	Ex9C5011G7	Ex9C50F11J	Ex9C50F11H	Ex9C50F11K	-
	65	Ex9C6511G7	Ex9C65F11J	Ex9C65F11H	Ex9C65F11K	-
	80	Ex9C8011G7	Ex9C80F11J	Ex9C80F11H	Ex9C80F11K	-
	100	Ex9C10011G7	Ex9C100F11J	Ex9C100F11H	Ex9C100F11K	-
<b>Power Poles - 3NO Auxiliary Contact - 2NO+2NC</b>						
115	Ex9C115E22G	-	Ex9C115F22H	Ex9C115F22K	Ex9C115F22L	
150	Ex9C150E22G	-	Ex9C150F22H	Ex9C150F22K	Ex9C150F22L	
185	Ex9C185E22G	-	Ex9C185F22H	Ex9C185F22K	Ex9C185F22L	
225	Ex9C225E22G	-	Ex9C225F22H	Ex9C225F22K	Ex9C225F22L	
265	Ex9C265E22G	-	Ex9C265F22H	Ex9C265F22K	Ex9C265F22L	
300	Ex9C300E22G	-	Ex9C300F22H	Ex9C300F22K	Ex9C300F22L	
400	Ex9C400E22G	-	Ex9C400F22H	Ex9C400F22K	Ex9C400F22L	
500	Ex9C500E22G	-	Ex9C500F22H	Ex9C500F22K	Ex9C500F22L	
630	Ex9C630E22GG	-	-	-	-	
800	Ex9C800E22GG	-	-	-	-	
1,000	Ex9C1000E22GG	-	-	-	-	

Additional products, accessories and higher ratings available. Contact your NOARK representative or visit [na.noark-electric.com](http://na.noark-electric.com) for additional information.