

Pay attention to security. Please read those operating manual and keep them for future use before installation. The company will not take the responsibility if you are not operate according to the instructions.

Important safety operating instructions :

1. Please read all warnings and instructions labels which is included in the box and fixture to avoid personal injury, property damage caused by fire, electric shock, components falling, cuts, bruises ,death and other dangerous.
2. Please follow these general precautions before installing, maintaining, or fixing.
3. Commercial installation, service and maintenance of luminaires should be performed by a qualified licensed electrician.
4. For residential installation: if you are unsure about the installation or maintenance of the luminaires, please consult a qualified licensed electrician and check your local electrical code.
5. Don't let the luminaires contact with the surface of combustible materials.
6. The luminaire should be connected to a UL junction box that has been properly installed and grounded.
7. These operating instructions do not declare that they contain all the details and changes in the equipment, or provide every possible emergency measure to achieve correct installation, application and maintenance.

Warning: Risk of electrical shock

1. Turn off electrical power at fuse or circuit breaker box before wiring fixture to the power supply
2. Make sure the fixture connect in right voltage. Connect the fixture with AC120V 50/60Hz power supply.
3. Make sure all electrical and grounded connections in accordance with the National Electrical Code and applicable local code requirements.
4. All wiring connections should be compliance with UL standard.

Caution: Risk of product damage

1. Never connect components under load
2. Do not hang or support these fixtures that will cut the outer jacket or damage wire insulation.
3. To avoid LED fixtures covered by insulation stuff, foam, or other material.
4. Unless individual product specifications deem, otherwise: Do not exceed fixtures maximum ambient temperature
5. Electrostatic Discharge can damage LED fixtures. Personal grounding equipment must be worn during installing or maintaining.
6. Do not touch individual electrical components as this can cause electrostatic discharge, shorten lamp life, or alter performance.

Caution: Risk of injury

1. Wear gloves and safety glasses at all times when moving luminaire from carton, installing, servicing or performing maintenance.
2. Avoid direct eye exposure to the light source while it is on. Or this may cause irreparable damage to the eyes.
3. Account for small parts and destroy packing material, as these may be hazardous to children.

Warning: Beware of burns

1. Allow fixture to cool before touch. Do not touch the lamp housing or light source.
2. Do not exceed maximum wattage marked on luminaire label.

Installation location:

1. Choose the installation location- on the wall or under the eaves.
2. Fix the lamp head in the general direction that the light can cover.
3. If necessary, raise the sensor and rotate it so that the controller can be aimed at the ground after installation.

Note: Do not install the lamp on the ground.

4. Keep flammables and other flammables away from light sources and lamps / lenses.

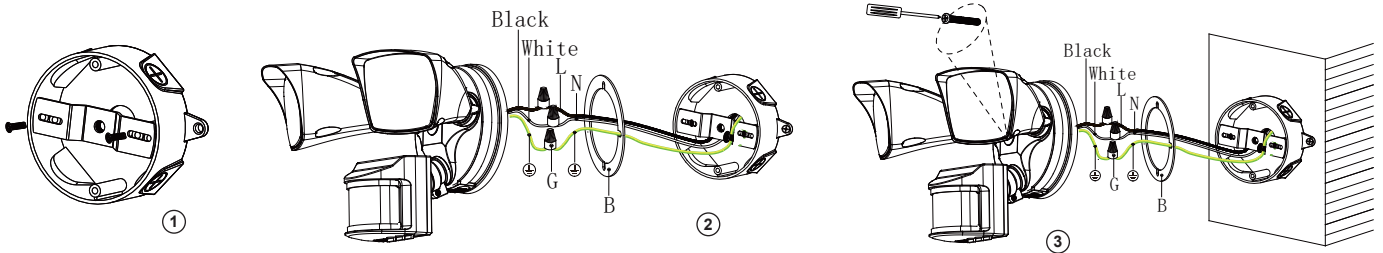
Make sure that all parts are ready before installing the light and then compare the parts with the packing list and the hardware catalogue. If there is any missing or damaged, please do not assemble the lamp. The time of install the light is probably 20 minutes.

Attention: lights must to be installed by the experienced household wire installer or a qualified electrician, Electrical system and the electrical connection method of lamps and lanterns must conform to the national electrical standards and specification requirements of the local architecture.

Product Parameter:

Model No.	Power	Voltage	CCT	CRI	LED	IP Rate	Efficiency	Lumen
SF18CR15C25W	25W	AC120V 50/60Hz	3CCT(3000K/4000K/5000K)	>80	SMD 2835	Dry Location, Damp Location, wet location	90-100lm/w	2250-2500lm

Base Installation:



1. Fixing the bracket installation hole with junction box hole by screw, the screw included in accessory bag.

Note: Don't connect electricity before installation and maintenance

2. Wiring the light and junction box through the spongy cushion(B) by terminal blocks(G)

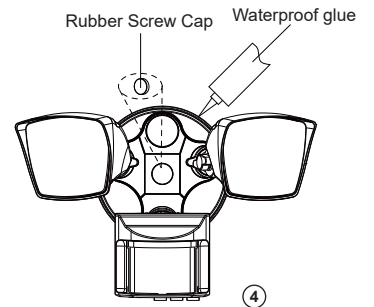
- a. Connect the white wire to the white
- b. Connect the black wire to the black
- c. Connect the yellow and green wire to the yellow and green

Note: Don't cut or remove any connectors on the wire to make sure the positive and negative connection is correct.

3. Installed the light on the spongy cushion and bracket by tie bolt, gasket and rubber ring.

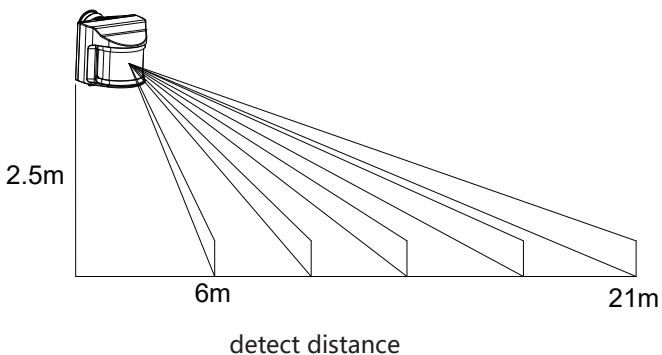
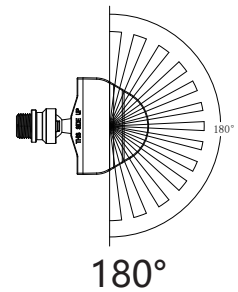
Note: Please make sure all wires are in junction box or lamp body before put the light into junction box.

4. Cover the screw cap, use waterproof glue seal the rear cover and the light to make sure the lamp waterproof



Product Function Description:

1. Mode is adjustable, by adjust the left side 3 switches, as follow: On-Time (Light stay on all the time) / Auto(motion and dusk-to-dawn function) / D2D(dusk-to-dawn function).
2. Photosensor sensitivity is adjustable(0-∞ Lux), rotating the first knob clockwise, the corresponding light intensity value is larger, and vice versa.
3. Stand-by time is adjustable(5S-5minutes), rotating the second knob clockwise, the corresponding lights out delay time is longer, and vice versa.
4. The MAX detect distance is adjustable(6-21m), and rotate the third knob clockwise, the corresponding detect distance is longer, and vice versa.



Three CCT model opens the cover of the rubber stopper to adjust the color temperature in three stages

