

# SH Series

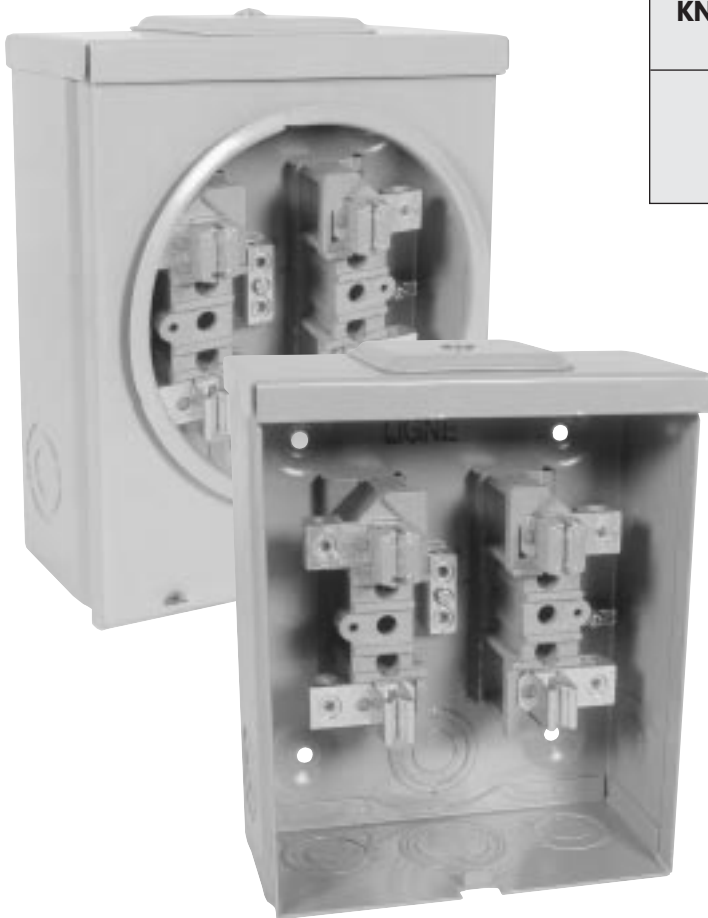


## 100 AMP - 600 VOLTS Shallow

CATALOGUE #	DESCRIPTION	WEIGHT
<b>SH400PW</b>	c/w hub closure plate, overhead/underground	5 lbs.
<b>SH400JW</b>	Overhead c/w 1 1/4" hub	5 lbs.
<b>SH400BW</b>	Overhead twin hub opening c/w 2 - 1 1/4" hubs	6 lbs.
<b>SH400BP</b>	Overhead twin hub opening c/w closure plates	5 lbs.
<b>SH400MW</b>	c/w mast coupler	5 lbs.
<b>SH400TW</b>	Underground - blank top	5 lbs.
<b>SH400KO</b>	Overhead with knockout on top (indoor)	5 lbs.

- CSA weatherproof enclosure 3
- Approved conductor range No.6 - No.2CU
- Copper only
- Insulated neutral available upon request

- Field adaptable Accessories
- 5th Jaw at 9 O'clock - SXX503



KNOCKOUT CODE	CONDUIT SIZE
<b>A</b>	1/2", 1", 1 1/4"
<b>B</b>	1", 1 1/4"
<b>C</b>	1", 1 1/4", 1 1/2"

