




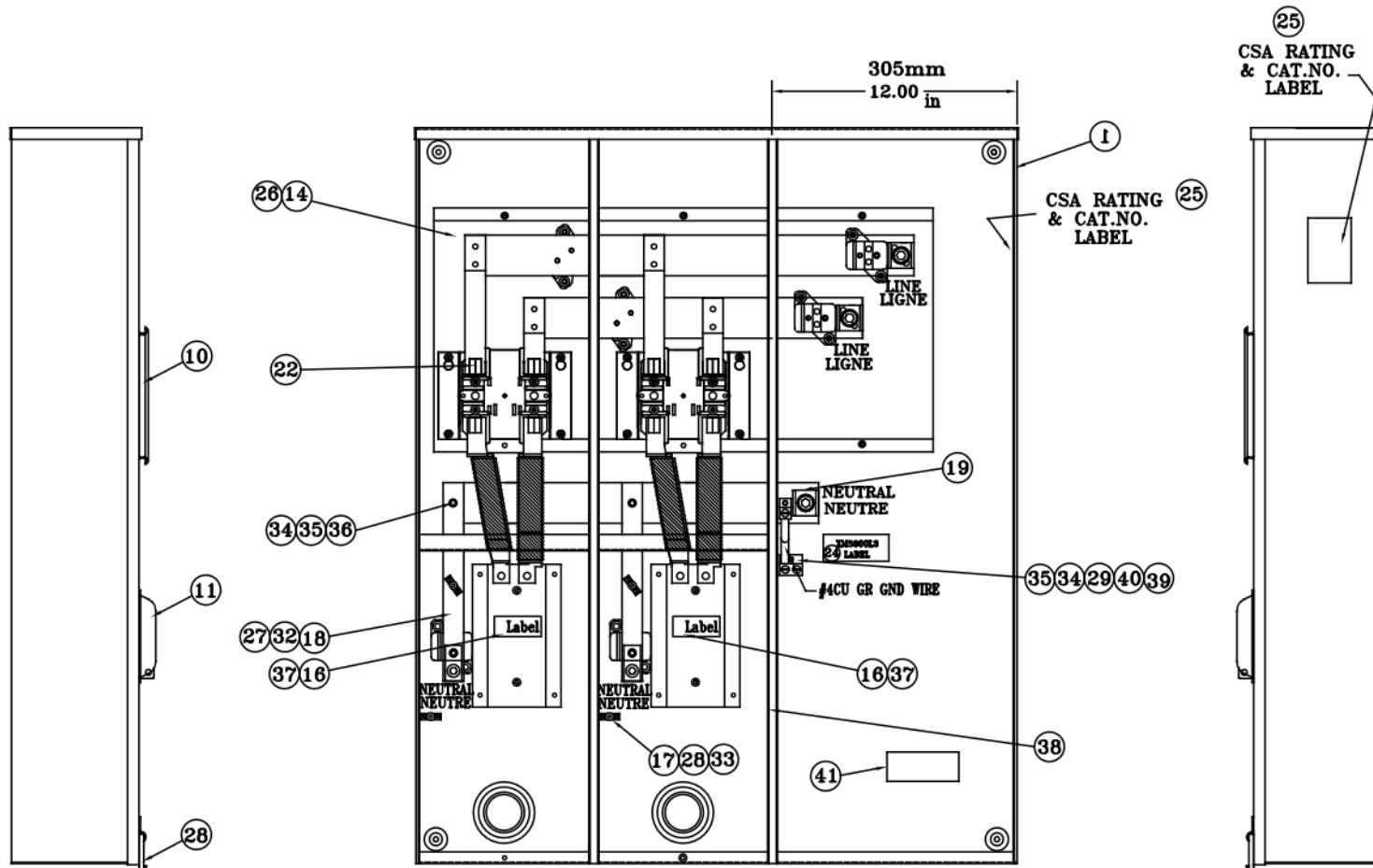
FOR UNDERGROUND SERVICE ONLY

RATING: 400 AMP MAIN
240V MAX. 200 AMP PER
POSITION.
BREAKER NOT INCLUDED

NOTE: FOR ABB BREAKERS
RATED 100-200AMPS MAXIMUM
ABB TYPE A2 SERIES

NOTE: LINE SIDE COVER
INTERNAL LATCH REQUIRES
REMOVAL OF FIRST METER
COVER TO REMOVE LINE
COVER.

UNLESS OTHERWISE SPECIFIED ALL DIMENSIONS SHOWN APPLY AFTER PLATINGS AND COATINGS			CAD MAINTAINED DATA CHANGES SHALL BE INCORPORATED ELECTRONICALLY			 Hydel a division of Circo Enterprises Inc.					
TOLERANCES APPLY AS SHOWN BELOW			PROPRIETARY NOT TO BE DISCLOSED OR REPRODUCED IN ANY MANNER WITHOUT THE EXPRESS WRITTEN PERMISSION OF HYDEL						TITLE: 400A MAIN-200A/POS MULTI-GANG COMB.METER SOCKET/BREAKER		
DECIMAL PLACES	INCHES	MILLIMETRES	THIRD ANGLE PROJECTION 			REV	DATE	REV BY	CHANGE	PART NO.	REV.
.XXX .XX .X	± .005 ± .010 ± .020	± 0.1 ± 0.3 ± 0.5				A	OCT 20/22	HS	CSA 115-20	CHANGES	JAL42RXRH-COGE
ANGULAR DIMENSIONS			SURFACE ROUGHNESS 			DRAWN BY		PJS	SEP 03/20	DWG NO	
XX* XX.X*	±0.5* ±0.1*					APPROVED BY		SAS		JAL42RXRH-COGE	



LINE: DUAL RATED CONNECTOR, ONE 600MCM-1/0 OR TWO 250MCM-1/0 CU/AL
 LOAD: SINGLE 250MCM-6 CU/AL

NEUTRAL - INSULATED, CONNECTED TO ENCLOSURE WITH #4CU GREEN WIRE JUMPER
 (WHERE ELECTRICAL AUTHORITIES REQUIRE THE NEUTRAL ASSEMBLY TO BE
 DISCONNECTED FROM THE ENCLOSURE - REMOVE WIRE)

UNLESS OTHERWISE SPECIFIED		
ALL DIMENSIONS SHOWN APPLY AFTER PLATINGS AND COATINGS		
TOLERANCES APPLY AS SHOWN BELOW		
DECIMAL PLACES	INCHES	MILLIMETRES
.XXX	± .005	± 0.1
.XX	± .010	± 0.3
.X	± .020	± 0.5
ANGULAR DIMENSIONS		
XX*	±0.5°	
XXX*	±0.1°	
SURFACE ROUGHNESS		
	MICROINCH	MICRON
	63	1.6

CAD MAINTAINED DATA CHANGES SHALL BE INCORPORATED ELECTRONICALLY	
PROPRIETARY NOT TO BE DISCLOSED OR REPRODUCED IN ANY MANNER WITHOUT THE EXPRESS WRITTEN PERMISSION OF HYDEL	
THIRD ANGLE PROJECTION	

REV	DATE	REV BY	CHANGE
A	OCT 20/22	HS	CSA 115-20 CHANGES
DRAWN BY		PJS	SEP 03/20
APPROVED BY		SAS	

 a division of Circo Enterprises Inc.	
TITLE: 400A MAIN-200A/POS MULTI-GANG COMB.METER SOCKET/BREAKER	
PART NO.	JAL42RXRH-COGE
DWG NO	JAL42RXH-COGE
REV. A	SHEET 2 OF 3

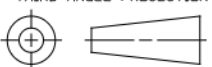
ITEM NO.	PART NO.	DESCRIPTION	QTY.	ITEM NO.	PART NO.	DESCRIPTION	QTY.
1	ZMS669BA35	Box Assembly 2 Pos. RH 12"	1	38	YMS675L10	Rain Channel	2
2				39	XLUG0031	Lug 1/0-14 Double	1
3				40	XWIRE0024	Wire #4 Green Copper 3-1/2 in,	.3ft
4				41	XMS600L7	LABEL PERMANENTLY BONDED NEUTRAL ASSEMBLY	1
5				42	XMS600L8	LABEL- MOVE LATCH UPWARDS	1
6				43			
7				44			
8							
9	ZMS670CA22	Cover Assembly - Line	1				
10	ZMS670CA13	Cover Assembly - Meter	2				
11	ZMS670CASSY14	Cover Assembly - Breaker	2				
12	XMS664	Meter Ring Assembly	2				
13	XMS46FD	Filler Disc.	2				
14	ZMS687A10	Bridge Assembly Meter JAL42R-RH	1				
15	YMS418BR6	Bridge For Breaker	2				
16	XMS600L5	Label ABB Breaker Type	2				
17	XMS122GL	Ground Lug	2				
18	ZMS291NA40	Neutral Bar Assembly - Load	2				
19	ZMS291NA44	Neutral Bar Assembly - Main	1				
20							
21							
22	XMS8A	Jaw Shroud	4				
23							
24	XMS600L3	Label - remove bonding wire	1				
25	JAL42RXRH-COGE	Label - CSA rating label (sim to MS29A36)	2				
26	XSCR007	Screw 10-32 x 1/4 TYPE C	13				
27	XSCR003	Screw 10-32 x 1/2 TYPE C	10				
28	XSCR045	Screw 10-32 x 7/8 TYPE C	2				
29	XSCR021	Screw 1/4-20 x 1/2 TYPE MS	1				
30							
31							
32	XFW0010	Washer Flat #10 0.44 OD. 0.218 ID 0.040T	8				
33	XLW0011	Lockwasher #10	2				
34	XFW0002	Washer Flat 1/4"	3				
35	XLW0002	Lockwasher 1/4"	3				
36	XNUT0011	Hex Nut 1/4-20	2				
37	XSCR168	Screw 8-32 x 2-3/4 MS	4				

UNLESS OTHERWISE SPECIFIED ALL DIMENSIONS SHOWN APPLY AFTER PLATINGS AND COATINGS		
TOLERANCES APPLY AS SHOWN BELOW		
DECIMAL PLACES	INCHES	MILLIMETRES
.XXX	± .005	± 0.1
.XX	± .010	± 0.3
.X	± .020	± 0.5
ANGULAR DIMENSIONS		
XX*	±0.5*	
XXX*	±0.1*	
SURFACE ROUGHNESS	MICROINCH	MICRON
	63	1.6


CAD MAINTAINED DATA
CHANGES SHALL BE INCORPORATED
ELECTRONICALLY

PROPRIETARY
NOT TO BE DISCLOSED OR REPRODUCED IN ANY
MANNER WITHOUT THE EXPRESS WRITTEN
PERMISSION OF HYDEL

THIRD ANGLE PROJECTION



REV	DATE	REV BY	CHANGE
A	OCT 20/22	HS	CSA 115-20 CHANGES
DRAWN BY		PJS	SEP 03/20
APPROVED BY		SAS	



a division of Circo Enterprises Inc.

TITLE: **400A MAIN-200A/POS
MULTI-GANG COMB.METER
SOCKET/BREAKER**

PART NO.	JAL42RXRH-COGE	REV.	A
DWG NO	JAL42RXRH-COGE	SHEET	3 OF 3