



JA Series

100 AMP SOCKET & BREAKER Combination with or without Breaker

CATALOGUE #	TYPE	DESCRIPTION	DIMENSIONS (IN.)			WEIGHT
			H	W	D	
JA400RW	O/H & U/G	Provision for Breaker, Gauge #6 - 1/0 AWG CU/AL*†	22	7 ³ / ₈	4 ³ / ₈	21 lbs.
JA400RWT	O/H & U/G	As above, c/w 100 amp 2 pole 10 kA breaker	22	7 ³ / ₈	4 ³ / ₈	21 lbs.
JA400RWT-HI	O/H & U/G	As above, c/w 100 amp 2 pole 22kA breaker	22	7 ³ / ₈	4 ³ / ₈	21 lbs.
JA400PWT-HI	O/H	As above, c/w 100 amp 2 pole 22kA breaker	22	7 ³ / ₈	4 ³ / ₈	21 lbs.
JA000PW	O/H	Provision for Breaker, Gauge #6 - 1/0 AWG CU/AL*†	18 ³ / ₄	7 ³ / ₈	3 ¹ / ₂	15 lbs.

- 4 Jaw - 100Amp - 120/240 VOLT
- Combination meter socket & circuit breaker
- CSA weatherproof enclosure 3R
- Suitable for single phase service entrance for mobile homes, farm services, trailers, temporary services, etc.
- Bottom compartment has provision for 2 pole circuit breaker (max. 100A) Siemens (Q), BE (THQB), or Eaton (BR)

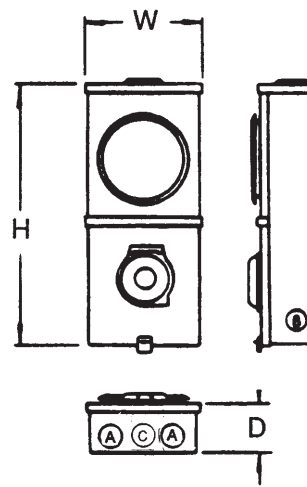
***Breaker not included (sold separately)**

†Select from table below

- Plug-in circuit breakers fully magnetic

- Use **SXK503** for 5th Jaw at 9 O'clock

KNOCKOUT CODE	CONDUIT SIZE
A	1/2", 1", 1 1/4"
C	1", 1 1/4", 1 1/2"
E	1", 1 1/4", 1 1/2", 2"



DOUBLE POLE

CAT. NO.	AMPS	RATED
MP215	15	10kA
MP220	20	10kA
MP230	30	10kA
MP240	40	10kA
MP250	50	10kA

DOUBLE POLE

CAT. NO.	AMPS	RATED
MP260	60	10kA
MP270	70	10kA
MP211	100	10kA
MP211H	100	22kA