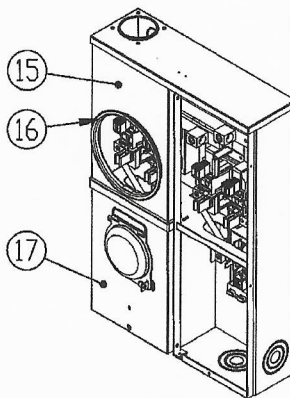
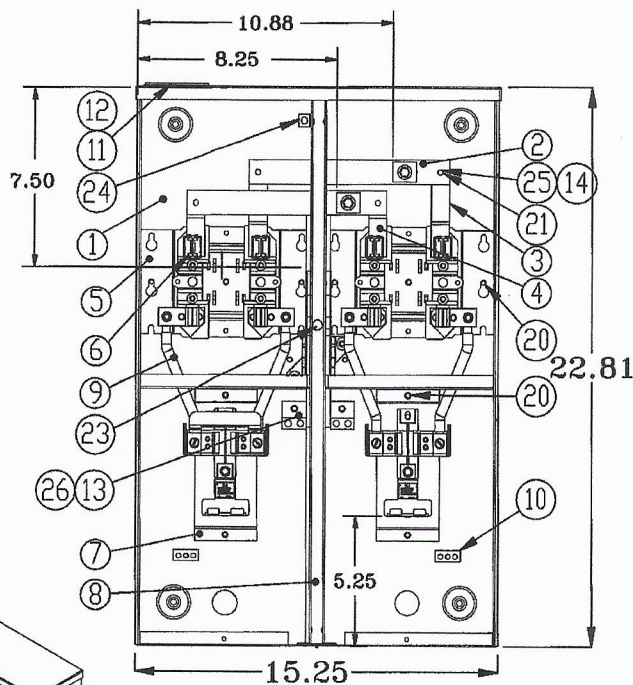


This Document should be DISCARDED if found detached from a Work Order

BOM Table			
ITEM NO.	PART NUMBER	DESCRIPTION	QTY.
1	ZMS595BA1	BODY ASSY, 2 POS FORMED	1
2	ZMS295LB40	BUS BAR ASSY	2
3	ZMS289JA3	BLOCK RH ASSY	2
4	ZMS290JA3	BLOCK LH ASSY	2
5	YMS64B2	BRIDGE 100A, 1.43 HIGH	2
6	XMS8A	JAW SHROUD, RED	4
7	ZMS489J4	BREAKER BASE ASSY	2
8	YMS147RC1	RAIN CHANNEL	1
9	YMS206W2	WIRE CONNECTOR	4
10	XMS114GL	GROUND LUG	2
11	XMS459HP3	HUB PLATE- SMALL	1
12	XMS616	HUB GASKET	1
13	ZMS291NA6	NEUTRAL BAR ASSY	2
14	XLW0011	#10 HELICAL LOCKWASHER	7
15	ZMS590CA1	METER COVER ASSY	2
16	XMS7050916	METER RING ASSY SS	2
17	ZMS606	COVER ASSY BREAKER	2
18	XSCR0008	10-32 X 1/2 MS COMB PHD	4
19	XFW0001	#10 FLAT WASHER	6
20	XSCR0007	10-32 X 1/2 SCREW, THREAD FORM, TYPE C	6
21	XCARB0013	CARRIAGE BOLT 10-32	4
22	XSCR003	10-32 X 1/2 SCREW, THREAD FORM TYPE C	4
23	XSCR148	10-32 X 1-3/8 SCREW BRASS	1
24	X6150646	GROUND LUG 1/0-14	1
25	XNUT0036	10-32 NUT	4
26	XG15105	DOUBLE WIRE CONNECTOR 2/0	2

NOTE: INTALL MP211H - 100AMP 2P 22KA BREAKERS - QTY.2



COVERS REMOVED FOR CLARITY

D	3/9/18	ADDED DET.26 DOUBLE CONNECTOR
C	2/22/16	ADDED DET.32 HUB GASKET
B	11/25/15	NEUTRAL REVISED
A	11/19/14	DRAWN
REV	DATE	CHANGE
DO NOT SCALE DRAWING		

HE
HYDEL ENTERPRISES
 DIVISION OF CIRCA METALS INC.
 206 GREAT GULF DRIVE, VAUGHAN

PROPRIETARY AND CONFIDENTIAL
 THE INFORMATION CONTAINED IN THIS DRAWING IS THE SOLE PROPERTY OF HYDEL ENTERPRISES. ANY REPRODUCTION IN PART OR AS A WHOLE WITHOUT THE WRITTEN PERMISSION OF HYDEL ENTERPRISES IS PROHIBITED.

DIMENSIONS ARE IN INCHES		REV. D	SHEET 1 OF 1
SCALE: NTS	DESCRIPTION	2 GANG 100A SCKT AND BREAKER OH	
DRAWN BY: PJS	DATE: 2/21/17	PART NO:	JA220P-HI
APP'D BY: [Signature]	DATE:	DWG. NO:	JA220P-HI