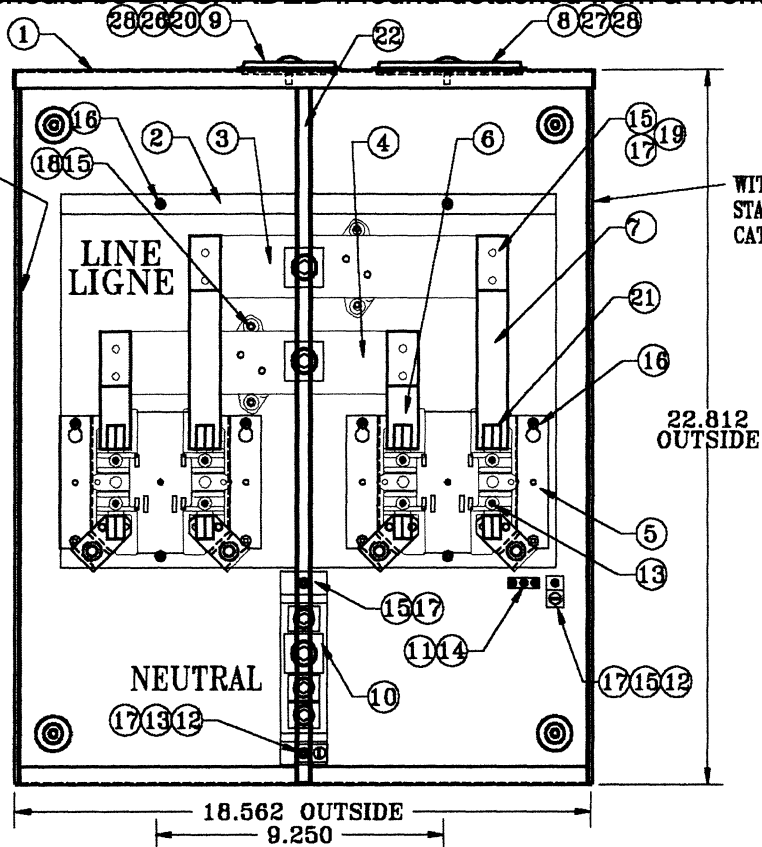
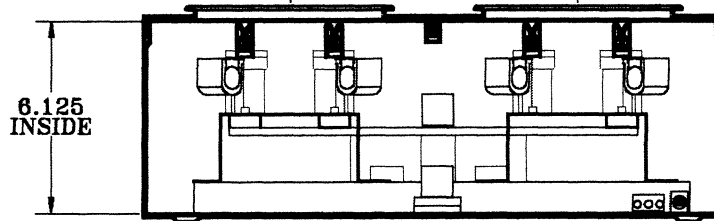


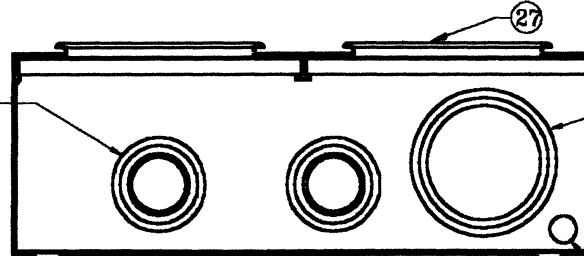
WITH INDELIBLE INK  
STAMP: CSA ENCLOSURE  
CAT.NO. & DATE CODE



WITH INDELIBLE INK  
STAMP: CSA ENCLOSURE  
CAT.NO. & DATE CODE




1-1/4, 1-1/2, 2, 2-1/2 KO.  
(1-3/4, 2, 2-1/2, 3" DIA.)  
- QTY. 2



3, 3-1/2, 4 KO.  
(3-5/8, 4-3/16, 4-11/16" DIA.)

1/2 KO. (7/8" DIA.)

DO NOT SCALE	
SCALE:	ALL DIMENSIONS ARE IN INCHES UNLESS NOTED
DR'N BY: PJS	DATE: MAR. 28 / 01
APP'D BY: <i>[Signature]</i>	DATE:
	
HYDEL ENTERPRISES INC. 49 HOWDEN ROAD, SCARBOROUGH	
REV.	SHEET 1 OF 2
DESCRIPTION 400A MAIN 200A LOAD 2 POS. RATED SOCKET	
PART NO. H42RH	
DWG. NO. H42RH	

