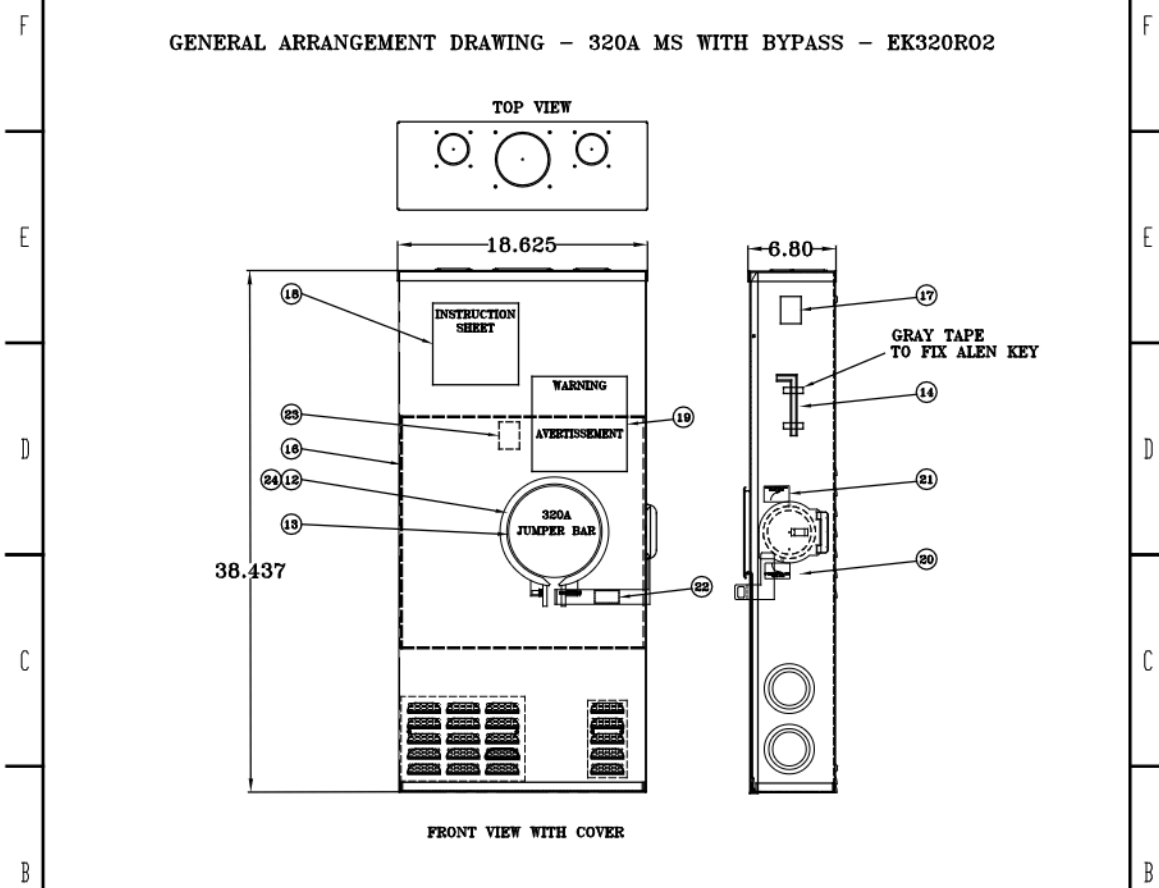

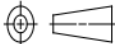


This Document should be DISCARDED if found detached from a Work Order

GENERAL ARRANGEMENT DRAWING - 320A MS WITH BYPASS - EK320R02

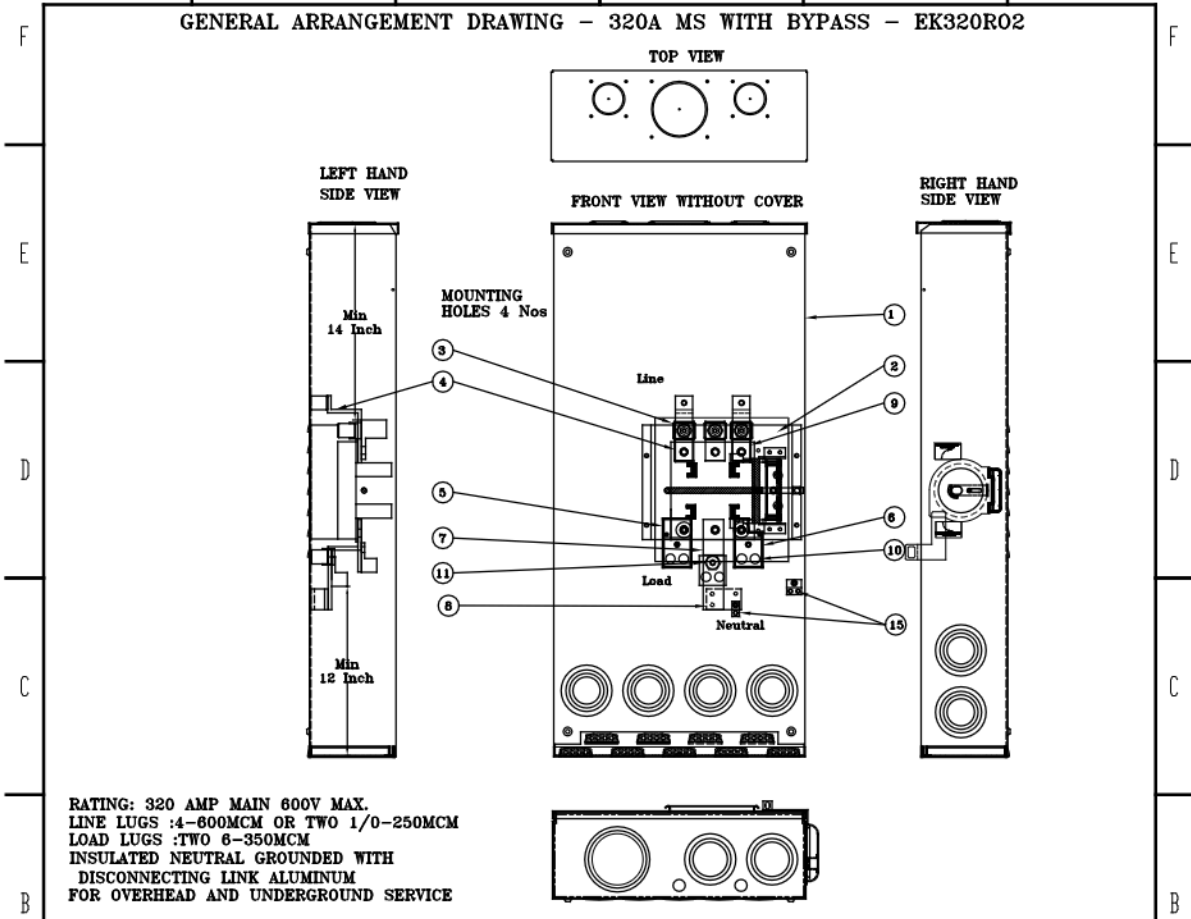


|  |                            |                         |  |  |  |   |      |           |         |          |       |
|--|----------------------------|-------------------------|--|--|--|---|------|-----------|---------|----------|-------|
| UNLESS OTHERWISE SPECIFIED<br>ALL DIMENSIONS SHOWN APPLY AFTER<br>PLATING AND COATINGS |                            |                         | CAD MAINTAINED DATA<br>CHANGES SHALL BE INCORPORATED<br>ELECTRONICALLY   |  |  | <br><small>a division of Orco Enterprises Inc.</small> |      |           |         |          |       |
| TOLERANCES APPLY AS SHOWN BELOW  |                            |                         | PROPRIETARY<br>NOT TO BE DISCLOSED OR REPRODUCED IN ANY<br>MANNER WITHOUT THE EXPRESS WRITTEN<br>PERMISSION OF HYDEL |  |  | TITLE: 320A METER<br>SOCKET WITH BYPASS   |      |           |         |          |       |
| DECIMAL PLACES   | INCHES                     | MILLIMETRES             | THIRD ANGLE PROJECTION<br>        |  |  | REV   | DATE | REV BY    | CHANGE  | PART NO. | REV.  |
| .XXX<br>.XX<br>.X  | ± .005<br>± .010<br>± .020 | ± .01<br>± .03<br>± .05 |  |  |  | DRAWN BY  | KRC  | MAR 12/21 | DWG NO. | EK320R02 | SHEET |
| ANGULAR DIMENSIONS   |                            |                         |  |  |  | APPROVED BY   |      |           | Krc     |          |       |
| XX°<br>XX.1°   | ± .5°<br>± .1°             |                         |  |  |  |   |      |           |         |          |       |
| SURFACE<br>ROUGHNESS   |                            |                         |  |  |  |   |      |           |         |          |       |
|  | MICRON/INCH                | MICRON                  |  |  |  |   |      |           |         |          |       |
|  | 63                         | 1.6                     |  |  |  |   |      |           |         |          |       |


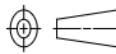
6                      5                      4                      3                      2                      1

This document should be DISCARDED if found detached from a work order

GENERAL ARRANGEMENT DRAWING - 320A MS WITH BYPASS - EK320R02



RATING: 320 AMP MAIN 600V MAX.  
 LINE LUGS :4-600MCM OR TWO 1/0-250MCM  
 LOAD LUGS :TWO 6-350MCM  
 INSULATED NEUTRAL GROUNDED WITH  
 DISCONNECTING LINK ALUMINUM  
 FOR OVERHEAD AND UNDERGROUND SERVICE

|   |        |  |   |   |        |        |             |       |
|---|--------|--|---|---|--------|--------|-------------|-------|
| UNLESS OTHERWISE SPECIFIED<br>ALL DIMENSIONS SHOWN APPLY AFTER<br>PLATINGS AND COATINGS |        | CAD MAINTAINED DATA<br>CHANGES SHALL BE INCORPORATED<br>ELECTRONICALLY   |   | <br>a division of Circo Enterprises Inc. |        |        |             |       |
| TOLERANCES APPLY AS SHOWN BELOW   |        | PROPRIETARY<br>NOT TO BE DISCLOSED OR REPRODUCED IN ANY<br>MANNER WITHOUT THE EXPRESS WRITTEN<br>PERMISSION OF HYDEL |   |   |        |        |             |       |
| DECIMAL PLACES  | INCHES | MILLIMETRES  | REV   | DATE  | REV BY | CHANGE | PART NO.    | REV.  |
| XXX   | ± .005 | ± .01  |   |   |        |        | EK320R02-GA |       |
| XX  | ± .010 | ± .03  |   |   |        |        |             |       |
| X   | ± .020 | ± .05  |   |   |        |        |             |       |
| ANGULAR DIMENSIONS  |        |  | THIRD ANGLE PROJECTION  |   |        |        | DWG NO.     | SHEET |
| XX°   | ± .5°  |  |  |   |        |        | EK320R02    | 20F3  |
| XXX°  | ± 1.0° |  |   |   |        |        |             |       |
| SURFACE ROUGHNESS   |        |  | DRAWN BY  |   |        | KRC    | MAR 12/21   |       |
| 63  |        |  | APPROVED BY   |   |        | KRC    |             |       |

6 5 4 3 2 1