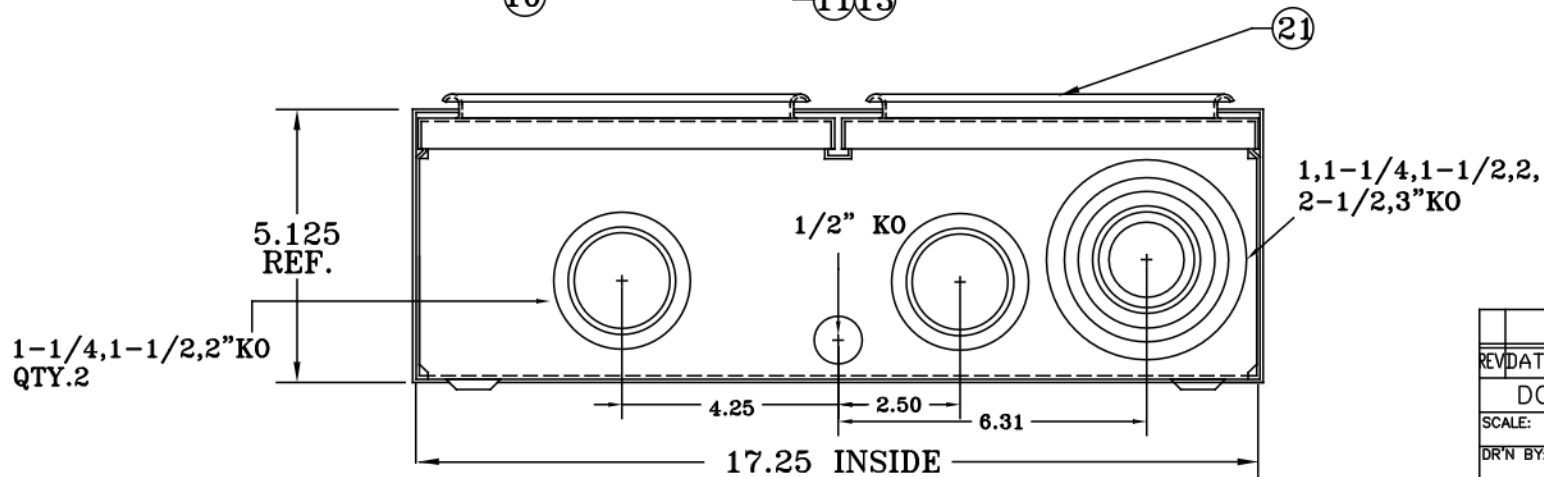


LABEL: CSA ENCLOSURE
CAT.NO. & DATE CODE
INSIDE AND OUTSIDE

RATING: MAIN-200AMP, 100A PER POSITION
SERVICE ENTRANCE RATED
WEATHERPROOF TYPE 3R ENCLOSURE
CONDUCTOR RANGE: LINE: 250MCM-6 CU/AL
LOAD: 1/0-6 CU/AL




REV	DATE	CHANGE	DESCRIPTION	SHEET 1 OF 2
DO NOT SCALE			ASSEMBLY SD220PWBCRH	
SCALE:	ALL DIMENSIONS ARE IN INCHES UNLESS NOTED		PART NO.	SD220PWBCRH
DR'N BY: SAS	DATE:	OCT.10/21	DWG. NO.	SD22BCR
APP'D BY: <i>Krc</i>	DATE:			



HYDEL ENTERPRISES
DIVISION OF CIRCA METALS INC.
206 GREAT GULF DRIVE, VAUGHAN

ITEM NO.	PART NO.	DESCRIPTION	QTY.
1	ZMSSD7050251RH	Box Assembly 2 Pos.	1
2	ZMS428HP3	Small Hub Opening Cover Plate	1
3	XMS616	Gasket	1
4	YMS115HS1	Hub Strap	1
5	XNUT0001	Wing Nut 1/4-20	1
6	ZMSSD7050250	Line Bus Assembly	2
7	YMSSD7050247	Bridge	1
8	ZMS563A2	Block Assembly - Meter Left	2
9	ZMS564A2	Block Assembly - Meter Right	2
10	ZMS6155792	Neutral Assembly	1
11	XMS122GL	Lug Ground	1
12	YMS7050244	Rain Channel SD Series	2
13	XSCR002	Screw 10-32 x 3/4 TYPE C,c/w Lckwshr	8
14	XCARB0013	Bolt Carriage 10-32x3/4"	4
15	XSCR010	Screw 10-32 x 3/8 TYPE C	2
16	XSCR028	Screw 10-32 x 1/4 TYPE C	6
17	XFW0001	Washer Flat #10	7
18	XLW0011	Lockwasher #10	7
19	XMS8A	Jaw Shroud	4
20	X6071428	Nut Hex 10-32	4
21	ZMS294CASSY	Cover Assembly - Meter	2
22	ZMS7050916	Meter Ring Assembly	2
23	XMS46FD	Filler Disc.	2
24			
25			
26			
27			
28			
29			
30			
31			
32			
33			
34			
35			
36			
37			

			
		HYDEL ENTERPRISES DIVISION OF CIRCA METALS INC. 206 GREAT GULF DRIVE, VAUGHAN	
REV	DATE	CHANGE	
DO NOT SCALE			REV. SHEET 2 OF 2
SCALE:	ALL DIMENSIONS ARE IN INCHES UNLESS NOTED		DESCRIPTION
DR'N BY: SAS	DATE: OCT.10/21	PART NO. SD220PWBCRH	200A MAIN 100A LOAD 2 Pos.Meter Socket
APP'D BY: krc	DATE:	DWG. NO. SD22BCR	