



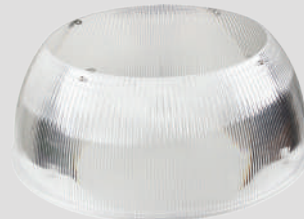
OPTIONS:



DC Sensor



Remote control



Reflector

Specifications

Model No		AST-HB18-300WF1B1T2C1-BH50
OPTICAL	Power	300W
	Lumen	42000LM
	Lumen Efficacy	140LM/W
	Viewing Angle	90°
	CCT	5000K
	CRI	>80
ELECTRICAL	Input Voltage	120-347VAC 50/60Hz
	PF	≥0.9
	THD	≤20%
	Driver Model	Fahold
MATERIALS	LED Type	SMD2835(0.5W)
	LED QTY	560 PCS
	Housing	Aluminum Alloy
	Cover	Clear PC cover
	Waterproof Rating	WET (IP65)
OTHERS	Operating Temperature	-40℃ TO 50℃
	Operating Humidity	10%-90% RH
	Storage Temperature	-40℃ TO 80℃
	Storage Humidity	10%-95% RH
	Warranty Time	5 Years

ADVANTAGE

- UL cUL certificate.
- IP65 driver, input voltage 120-347VAC.
- No UV or IR in the beam.
- Easy to install and operate.
- Energy saving, long lifespan.
- Light is soft and uniform, safe to eyes.
- Instant start, NO flickering, NO humming.
- Green and eco-friendly without mercury.

APPLICATION

- Warehouse, factory and workshops;
- Highway toll station and gas station;
- Exhibition hall;
- Gymnasium and supermarkets, etc.

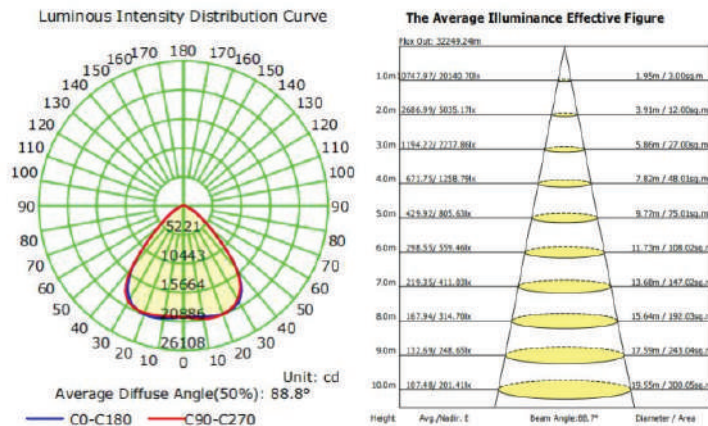


LIGHT DISTRIBUTION TESTING PARAMETERS (300W)

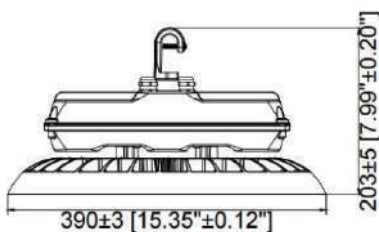
Photometric Results

CIE Class: Direct
 Measurement Flux: 41985.6 lm
 Downward Ratio: 100%
 Horizontal Diffuse Angle(10%,50%): H124.3,H88.7
 Vertical Diffuse Angle(10%,50%): V124.5,V89
 Luminaire Efficacy Rating (LER): 141.66
 Max. Intensity: 20886.44 cd
 S/MH(C0/C180): 1.38

Total Rated Lamp Lumens: 41985.6 lm
 Efficiency: 100%
 Upward Ratio: 0%
 C0r0 Intensity: 20140.7 cd
 Pos of Max. Intensity: H90 V17
 S/MH(C90/C270): 1.39



DIMENSIONS



300W

