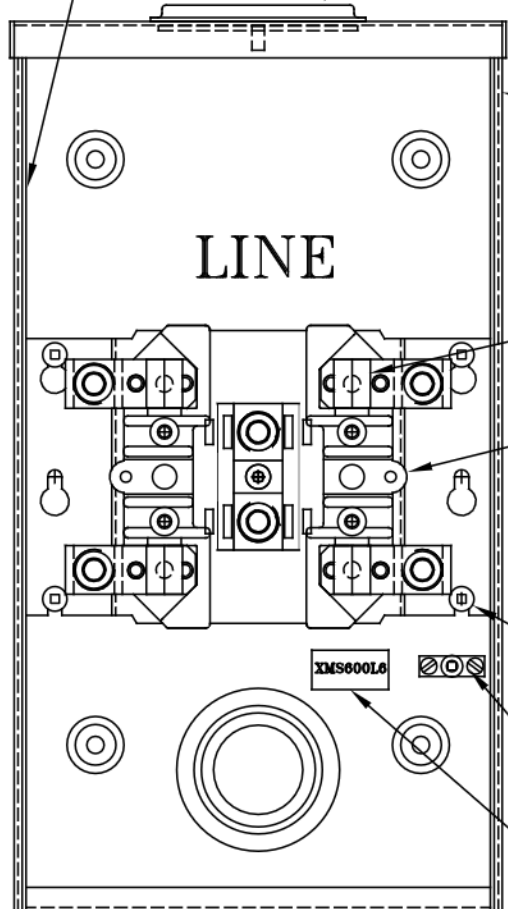


LABEL: CSA ENCLOSURE
RATING, CAT.NO., & CODE

ZMS428HP3 (Hub Plate) Δ
YMS115HS1 (Hub Strap)
XNUT0001 (1/4-20 Wing Nut)
XMS616 (HUB GASKET) Δ
ALTERNATE:XMS459HP3

13.68
REF.



ZMS96B28 (Body Assembly)

LABEL: CSA ENCLOSURE
RATING, CAT.NO., & CODE

LINE

XMS8A (Jaw Shroud)
(2 REQ'D.)

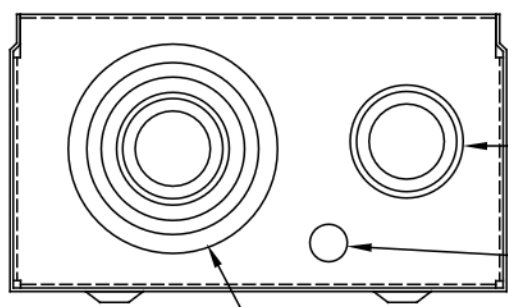
XMS566(Block Assembly)
(1 REQ'D.)

WITH ISOLATED NEUTRAL ASLY

XSCR007 (4 REQ'D.)
(10-32 X 1/4 TYPE C)

XMS122GL (Ground Lug #2-14)
XSCR002 (10-32 X 3/4 TYPE C)

NEW LABEL: XMS600L6
PERMANENT ISOLATED
NEUTRAL ASSEMBLY



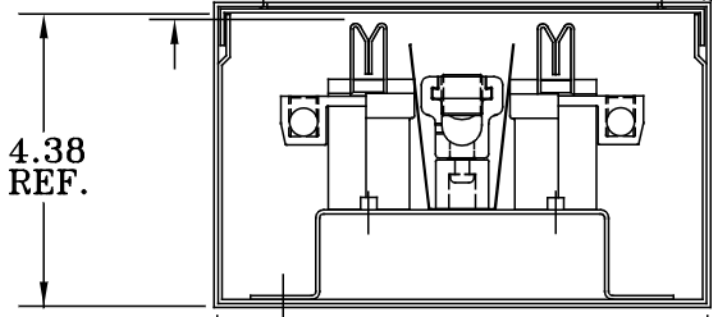
1,1-1/4,1-1/2"KO.
(1-3/8,1-3/4,2"DIA.)

1/2"KO
(7/8"DIA.)

1,1-1/4,1-1/2,2,2-1/2,3"KO.
(1-3/8,1-3/4,2,2-1/2,3,3-5/8"DIA.)

0.590
0.500

ZMS105B12
(Cover Assembly)



4.38
REF.

7.50 ref.

NOTE: ADD ZMS7050916 (Sealing Ring Assy.) &
XMS46FD (Filler Disc)

A	OCT. 17/22	CSA ISOLATED NEUTRAL CHANGES
REV	DATE	CHANGE
DO NOT SCALE		
SCALE:	ALL DIMENSIONS ARE IN INCHES UNLESS NOTED	
DR'N BY:	PJS	DATE: OCT.17/00
APP'D BY:	krc	DATE:



HYDEL ENTERPRISES INC.
49 HOWDEN ROAD, SCARBOROUGH

REV.	A	SHEET OF
DESCRIPTION ENCL.SIZE: 13.68 X 7.5 X 4.38		
100A OVERHEAD METER SOCKET		
PART NO.	SE400RWBC	
DWG. NO.	SE400RWBC	