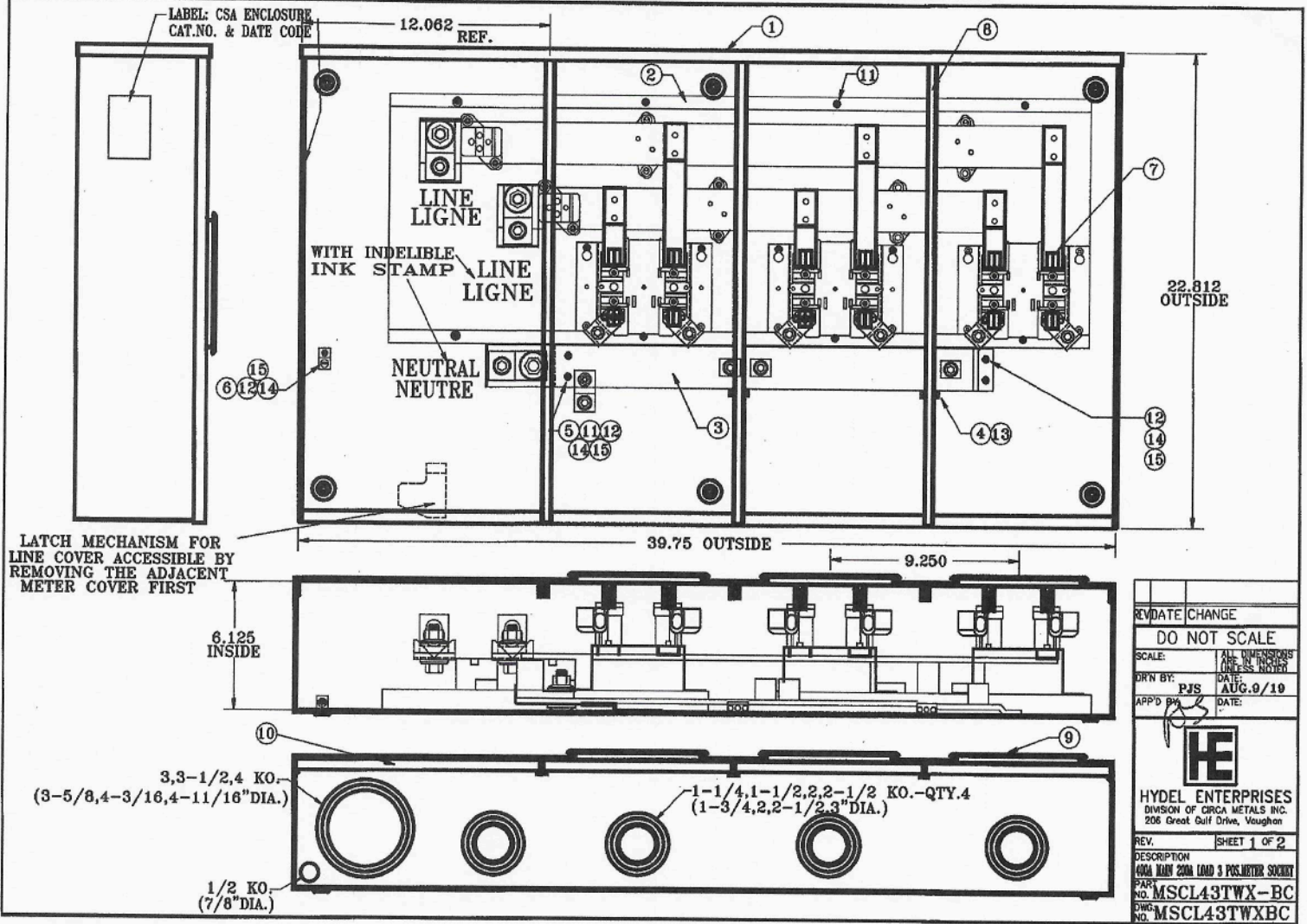



This Document should be DISCARDED if found detached from a Work Order



REV	DATE	CHANGE
DO NOT SCALE		
SCALE:	ALL DIMENSIONS ARE IN INCHES UNLESS NOTED	
DRN BY:	PJS	DATE: AUG.9/10
APP'D BY:	[Signature]	DATE:
<b>HE</b>		
HYDEL ENTERPRISES DIVISION OF CIRCA METALS INC. 206 Great Gulf Drive, Vaughan		
REV.	SHEET 1 OF 2	
DESCRIPTION 400A 100V 200A LOAD 3 POS.METER SOCKET		
PART NO.	MSCL43TWX-BC	
DRAW. NO.	MSCL43TWXBC	

ITEM NO.	PART NO.	DESCRIPTION	QTY.
1	ZMS300BA53	Box Assembly	1
2	ZMS584A73	Bridge Assembly	1
3	ZMS306NB43	Neutral Bridge Assembly	1
4	XMS122GL	Lug Ground	2
5	YMS441	BRACKET-Neutral Support	1
6	X6150646	Lug 1/0-14 Hsco TAO	1
7	XMS8A	Jaw Shroud	6
8	YMS147RC1	Rain Channel 22-5/16"	3
9	ZMS105B18	Cover Assembly - Meter	3
10	ZMS151CA4	Cover Assembly - Line	1
11	XSCR007	Screw 10-32 x 1/4 TYPE C	10
12	XSCR003	Screw 10-32 x 1/2 TYPE C	5
13	XSCR002	Screw 10-32 x 3/4 TYPE C SEMS	2
14	XFW0001	Washer Flat #10	5
15	XLW0011	Lockwasher #10	5
16	ZMS116SR	Meter Ring Assembly	3
17	XMS46FD	Filler Disc.	3
18			
19			
20			
21			
22			
23			
24			
25			
26			
27			
28			
29			
30			
31			
32			
33			

This Document should be DISCARDED if found detached from a Work Order

REV	DATE	CHANGE
<b>DO NOT SCALE</b>		
SCALE:	ALL DIMENSIONS ARE IN INCHES UNLESS NOTED	
DRN BY:	PJS	DATE: AUG. 9/19
APP'D BY:		DATE:
		
<b>HYDEL ENTERPRISES</b> DIVISION OF CIRCA METALS INC. 208 Great Gulf Drive, Vaughan		
REV. A	SHEET 2 OF 2	
DESCRIPTION 400A MAIN 200A LOAD 3 Pwr Meter Socket		
PART NO. MSCL43TWX-BC		
DWG. NO. MSCL43TWXBC		