

120V-277V LANDSCAPE LIGHTING



120V-277V INTEGRATED LED

85 ACCENT LIGHTS

86 FLOOD LIGHTS

87 IN-GROUND

87 120V ACCENT



Name	C-Series 5W Small Accent		C-Series 10W Small Accent	
SKU # Finish Beam Angle	16209AZT30* - 15° 16209BKT30* - 15° 16210AZT30* - 40° 16210BKT30* - 40° 16211AZT30* - 55°		16212AZT30 - 15° 16213AZT30 - 40° 16213BKT30 - 40° 16214AZT30 - 55° 16214BKT30 - 55°	
Watt/pf	5.2W/.9pf		10W/.9pf	
Kelvin, Lumens & Efficacy	3000K, 473 lm, 91lm/W		3000K, 831 lm, 84 lm/W	16213AZT40 - 40° 4000K, 942 lm, 94 lm/W
Dimensions	2.75"W x 7"L x 5.25"H		2.75"W x 7"L x 5.25"H	
Included Accessories	Comes with 3 gel-filled wire nuts. Vandal-proof hardware installed.		Comes with 3 gel-filled wire nuts. Vandal-proof hardware installed.	
Optional Accessories	<i>Riser Stems AZT/BKT (1/2"):</i> 6" 15645 , 12" 15656 , 18" 15657 , 24" 15658 . Adjustable 15570 . Stem Coupler 15649 .		<i>Mounting Accessories AZT/BKT:</i> Surface Flange 15601 . Bracket 15607 . Tree Mount 15609 . Elbow 15647 . <i>Stakes:</i> 8" 15575 . 14" 15576 . Power Post 15276 .	



Name	C-Series 14W Large Accent		C-Series 21W Large Accent	
SKU # Finish Beam Angle	16215AZT30* - 15° 16216AZT30* - 33° 16216BKT30* - 33° 16217AZT30* - 55°		16216AZT40* - 33°	16218AZT30* - 15° 16218BKT30* - 15° 16219AZT30* - 33° 16219BKT30* - 33° 16220AZT30* - 55° 16220BKT30* - 55°
Watt/pf	14.6W/.9pf		21W/.9pf	
Kelvin, Lumens & Efficacy	3000K, 1312 lm, 90 lm/W	4000K, 1200 lm, 84 lm/W	3000K, 2033 lm, 96 lm/W	16218AZT40* - 15° 4000K, 1800 lm, 86 lm/W
Dimensions	4"W x 8.5"L x 6.5"H		3.75"W x 8.5"L x 6.5"H	
Included Accessories	Comes with 3 gel-filled wire nuts. Vandal-proof hardware installed.		Comes with 3 gel-filled wire nuts. Vandal-proof hardware installed.	
Optional Accessories	<i>Riser Stems AZT/BKT (1/2"):</i> 6" 15645 , 12" 15656 , 18" 15657 , 24" 15658 . Adjustable 15570 . Stem Coupler 15649 .		<i>Mounting Accessories AZT/BKT:</i> Surface Flange 15601 . Bracket 15607 . Tree Mount 15609 . Elbow 15647 . <i>Stakes:</i> 8" 15575 . 14" 15576 . Power Post 15276 .	



*Many Kichler Lighting C-Series fixtures appear on the DesignLights Consortium (DLC) qualified list of products. Visit www.designlights.org for a complete listing.

Flood



Name	C-Series 12W Small Flood		C-Series 23W Small Flood	
SKU # Finish Beam Angle	16221AZT30*		16222AZT30	
Watt/pf	12W/.9pf		23W/.9pf	
Kelvin, Lumens & Efficacy	3000K, 1120 lm, 89 lm/W		3000K, 2050 lm, 86 lm/W	4000K, 2000 lm, 87 lm/W
Dimensions	6"W x 7"L x 7"H		6"W x 7"L x 7"H	
Included Accessories	Comes with 3 gel-filled wire nuts.		Comes with 3 gel-filled wire nuts.	
Optional Accessories	Riser Stems AZT/BKT (1/2"): 6" 15645 , 12" 15656 , 18" 15657 , 24" 15658 . Adjustable 15570 . Stem Coupler 15649 .		Mounting Accessories AZT/BKT: Surface Flange 15601 . Bracket 15607 . Tree Mount 15609 . Elbow 15647 . Stakes: 8" 15575 . 14" 15576 . Power Post 15276 .	



Name	C-Series 33W Medium Flood		C-Series 52W Medium Flood	
SKU # Finish Beam Angle	16223AZT30*		16224AZT30*	
Watt/pf	33.5W/.9pf		50W/.9pf	
Kelvin, Lumens & Efficacy	3000K, 3285 lm, 99 lm/W		3000K, 4496 lm, 89 lm/W	
Dimensions	8"W x 8"L x 8"H		8"W x 8"L x 8"H	
Included Accessories	Comes with 3 gel-filled wire nuts.		Comes with 3 gel-filled wire nuts.	
Optional Accessories	Riser Stems AZT/BKT (1/2"): 6" 15645 , 12" 15656 , 18" 15657 , 24" 15658 . Adjustable 15570 . Stem Coupler 15649 .		Mounting Accessories AZT/BKT: Surface Flange 15601 . Bracket 15607 . Tree Mount 15609 . Elbow 15647 . Stakes: 8" 15575 . 14" 15576 . Power Post 15276 .	



*Many Kichler Lighting C-Series fixtures appear on the DesignLights Consortium (DLC) qualified list of products. Visit www.designlights.org for a complete listing.

In-Ground

120V

INTEGRATED LED



Name	C-Series 10W In-Ground		C-Series 20W In-Ground	
SKU #	16227CBR30 - 45°		16230CBR30 - 45°	16230CBR40 - 45°
Finish	16228CBR30 - 60°		16258CBR30 - 60°	
Beam Angle				
Wattage	10W		20W	
Kelvin, Lumens & Efficacy	3000K, 775 lm, 80 lm/W		3000K, 1625 lm, 80 lm/W	4000K, 775 lm, 80 lm/W
Dimensions	6.25"W x 6.25"L x 10.3"H		6.25"W x 6.25"L x 10.3"H	
Included Accessories	Drive-over rated up to 4,500 lbs with +/-15° articulation. Comes with 3 gel-filled wire nuts. Composite installation sleeve included for direct in-ground or concrete commercial installations.		Drive-over rated up to 4,500 lbs with +/-15° articulation. Comes with 3 gel-filled wire nuts. Composite installation sleeve included for direct in-ground or concrete commercial installations.	
Optional Accessories	Accessory trim ring in Stainless Steel 16290SS .		Accessory trim ring in Stainless Steel 16290SS .	

120V Accent



Name	120V 12.5W Small Accent	120V 19.5W Large Accent	120V 29W Large Accent
SKU #	16200BBR30 - 10°	16202BBR30 - 10°	16204BBR30 - 10°
Finish	16201BBR30 - 35°	16203BBR30 - 35°	16205BBR30 - 35°
Beam Angle	16206BBR30 - 60°	16207BBR30 - 60°	16208BBR30 - 60°
Watt/pf	12.5W/.85pf	19.5W/.9pf	29W/.9pf
Kelvin, Lumens & Efficacy	3000K, 588 lm, 47 lm/W	3000K, 955 lm, 49 lm/W	3000K, 1130 lm, 39 lm/W
Dimensions	3"W x 4.75"L x 4.75"H	4.5"W x L x 4.75"H	4.5"W x 6.5"L x 5.5"H
Included Accessories			
Optional Accessories	Riser Stems AZT/BKT (1/2"): 6" 15645 , 12" 15656 , 18" 15657 , 24" 15658 . Adjustable 15570 . Stem Coupler 15649 .		Mounting Accessories AZT/BKT: Surface Flange 15601 . Bracket 15607 . Tree Mount 15609 . Elbow 15647 . Stakes: 8" 15575 . 14" 15576 . Power Post 15276 .

120V DROP-IN



89 ACCENT & IN-GROUND

90 PATH & SPREAD



Name	4" Small Accent	5" Medium Accent	7" Large Accent
SKU # Finish	15231AZT 15231BKT	15241AZT 15241BKT	15251AZT
Socket Type	PAR20	PAR30L	PAR38/R40
Dimensions	4"W x 7.25"L x 6.5"H	5"W x 9"L x 7"H	6.5"W x 9.75"L x 7.75"H
Included Accessories	8" of usable 200°C, 18 AWG wire leads.	8" of usable 200°C, 18 AWG wire leads.	8" of usable 200°C, 18 AWG wire leads.
Optional Accessories	Power Post 15276BK . Surface Mounting Bracket 15601 . Junction Box Mounting Bracket 15609 .	Power Post 15276BK . Surface Mounting Bracket 15601 . Junction Box Mounting Bracket 15609 .	Power Post 15276BK . Surface Mounting Bracket 15601 . Junction Box Mounting Bracket 15609 .



Name	10" PAR38 In-Ground	7" Small PAR20/PAR30 In-Ground
SKU # Finish	15295AZ	15268AZ
Socket Type	E26 (Medium) for use with PAR20 and PAR30 Lamps	E26 (Medium) for use with PAR20 and PAR30 Lamps
Dimensions	10"W x 13.5"H	7"W x 8.25"H
Included Accessories	Adjustable Aim: 15° vertical tilt, 358° rotation with wing-nut locking mechanism. Drive over capacity 3,000 lbs.	Adjustable Aim: 25° tilt, 358° rotation.
Optional Accessories	Concrete Pour Kit (Drive-over) 15608 . Rock Guard 15688 .	AZ Rock Guard 15694 .

Path & Spread



Name	Conical Three Tier Path Light	Conical Large One Tier Path Light	Eclipse™ Large Path Light
SKU # Finish	15205AZT 15205BKT	15211AZT 15211BKT	15236BKT 15236TZT
Socket Type	E26 (Medium)	E26 (Medium)	E26 (Medium)
Dimensions	6"W x 9.5"H	11.5"W x 9.5"H	9"W x 25"H
Included Accessories	30" of usable 105°C, #18 AWG wire leads. Mounting Stems and Bollard Kit sold separately.	30" of usable 105°C, #18 AWG wire leads. Mounting Stems and Bollard Kit sold separately.	6" of usable 105°C, #18 AWG wire leads.
Optional Accessories	Stems 15645 , 15656 , 15657 or 15658 . Power Post 15276BK . Bollard Mounting Kits 15665 , 15666 or 15667 . Bollard Mounting Stakes 15578 . Bollard Template Kit 15671 . Surface Mounting Flange (needed for attachment to junction box) 15601 . Flange Mounting Nipple 15602AL .	Stems 15645 , 15656 , 15657 or 15658 . Power Post 15276BK . Bollard Mounting Kits 15665 , 15666 or 15667 . Bollard Mounting Stakes 15578 . Bollard Template Kit 15671 . Surface Mounting Flange (needed for attachment to junction box) 15601 . Flange Mounting Nipple 15602AL .	Power Post 15276BK . Surface Mounting Flange (needed for attachment to junction box) 15601 . Flange Mounting Nipple 15602AL .



Name	Cross Creek™	Traditional Marine Lantern
SKU # Finish	15232AGZ	15239OZ
Socket Type	E26 (medium)	E26 (Medium)
Dimensions	7"W x 7.5"L x 27"H	8"W x 10.75" L x 26.25"H
Included Accessories	6" of usable 105°C, #18 AWG wire leads.	6" of usable 105°C, #18 AWG wire leads.
Optional Accessories	Power Post 15276BK . Surface Mounting Flange (needed for attachment to junction box) 15601 .	Power Post 15276BK . Surface Mounting Flange (needed for attachment to junction box) 15601 .

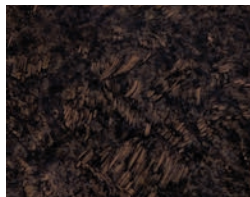


120V LED LAMPS



LAMP	BASE / LAMP TYPE	WATTS	KELVIN / LUMENS	BEAM ANGLE/ITEM #	
				25° Spot	40° Flood
	PAR20 Wet Location W	7W Compares up to 35W Halogen	3000K – 330 lm	-	18085
			4200K – 350 lm	18083	18086
	PAR30 Longneck Wet Location W	12W Compares up to 50W Halogen	3000K – 610 lm	-	18115
	PAR38 Wet Location W	17W Compares up to 75W Halogen	4200K – 900 lm	-	18098

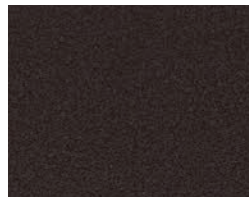
W Wet location versions designed and listed for use in an enclosed or open fixture. Using lamp in enclosed fixtures can result in up to 30-40% loss in lumen output based on test data.



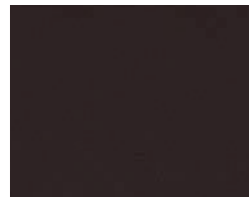
AGZ
Aged Bronze



AZ
Architectural Bronze™



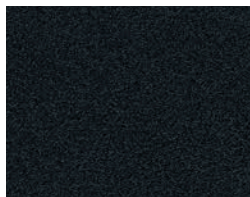
AZT
Textured Architectural Bronze™



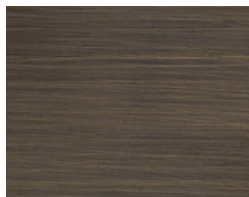
BBR
Bronzed Brass



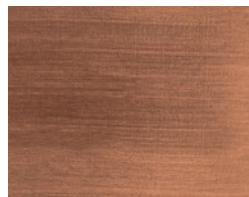
BK
Black



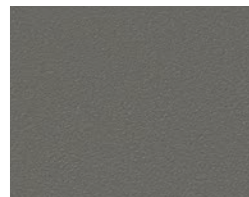
BKT
Textured Black



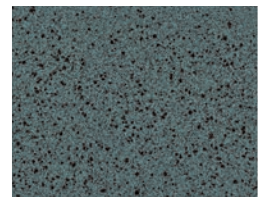
CBR
Centennial Brass



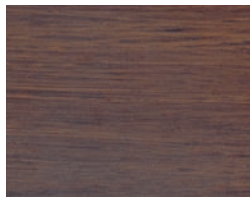
CO
Copper



GRY
Textured Gray



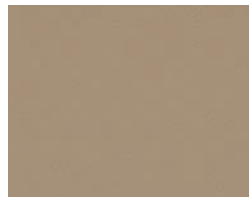
MST
Textured Midnight Spruce



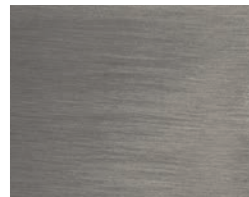
OB
Olde Brick®



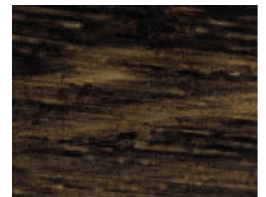
OZ
Olde Bronze®



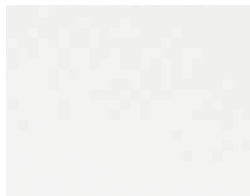
SD
Textured Sand



SS
Stainless Steel



TZT
Textured Tannery Bronze™



WH, WHT
Textured White