

This Document should be DISCARDED if found detached from a Work Order

INDELIBLE INK STAMP:  
 CSA ENCLOSURE 3  
 CAT.NO. & DATE CODE  
 STAMP AS PER  
 DWG.NO. MS219RS15

ZMSS7C7051466 (Body Assembly)  
 XCARB0009 (1/4-20 X 1 Carriage Bolt)  
 YMS42HP1 (Hub Plate)  
 YMS115HS1 (Hub Strap)  
 XNUT0001 (1/4-20 Wing Nut)

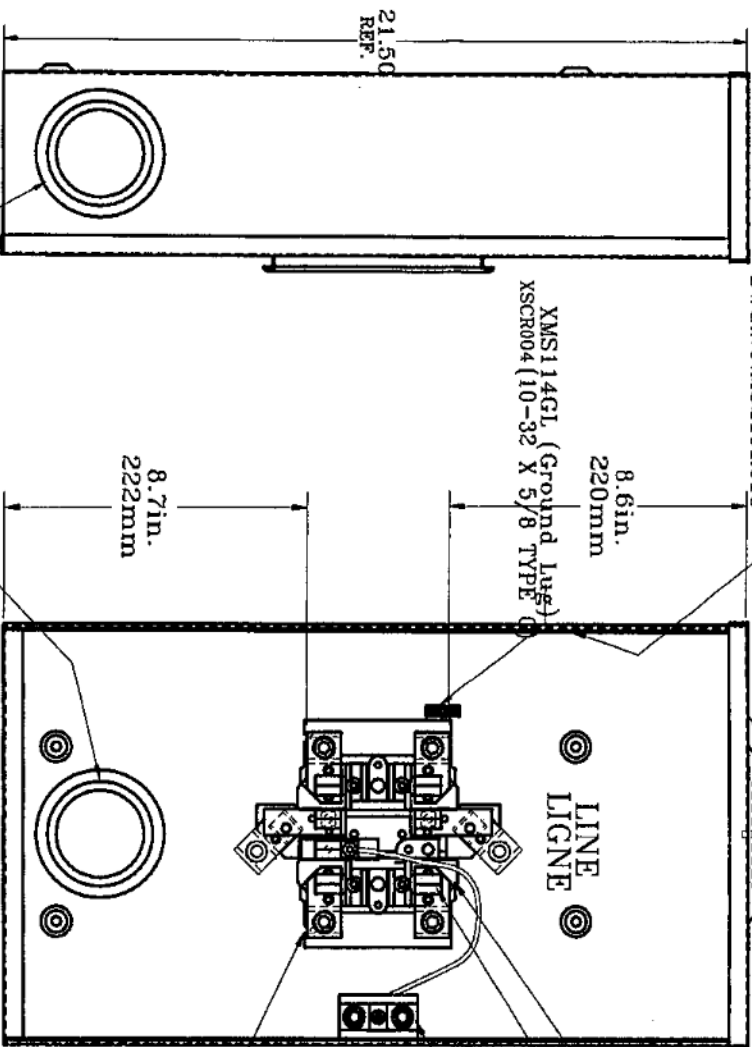
INDELIBLE INK STAMP:  
 CSA ENCLOSURE 3  
 CAT.NO. & DATE CODE  
 STAMP AS PER DWG.NO. MS219RS15

ZMS516 (Block Assy.)  
 YMSBA (Red Jaw Shroud)  
 (3 REQ'D.)

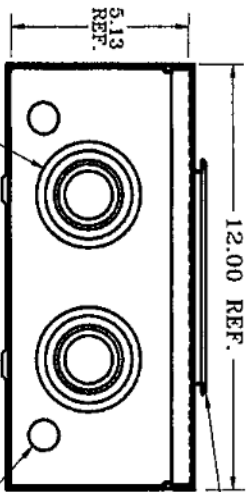
YMSSTC7051462 (Neutral Lug)  
 XSCR003 (10-32 X 1/2)

XSCR007 (10-32 X 1/4 TYPE C)  
 (4 SCREWS REQ'D.)

NOTE: ADD ZMS7050916  
 (Sealing Ring Assy.)  
 & XMS46FD  
 (White Filler Disc)

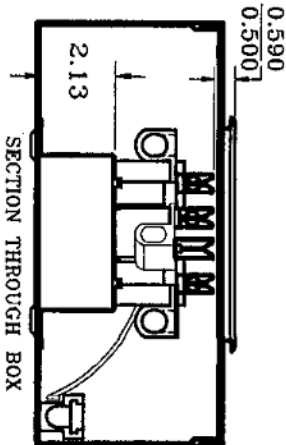


2,2-1/2, 3 KO. (QTY. 3)  
 (2-1/2, 3, 3-5/8 DIA.)



1,1-1/4, 1-1/2, 2, 2, 2-1/2, 3 KO. (QTY. 2)  
 (1-3/8, 1-3/4, 2, 2-1/2, 3, 3-5/8 DIA.)

ZMS105B8-(Cover Assembly)



SECTION THROUGH BOX

REV A	DESCRIPTION	DATE	BY	APP'D.
1	HYDEL ENTERPRISES	JUNE 3/08	PJS	[Signature]
2	DIVISION OF CIRCA METALS INC.			
3	200 GREAT GULF DRIVE VAUGHAN			
HYDEL ENTERPRISES		SHEET OF		
DIVISION OF CIRCA METALS INC.		STC700RK		
200 GREAT GULF DRIVE VAUGHAN		STC700RK		
SCALE: 200A 3PH OH/UG METER SOCKET		DWG. NO. STC700RK		
DO NOT SCALE				
REVISIONS				
DATE				
BY				
APP'D.				