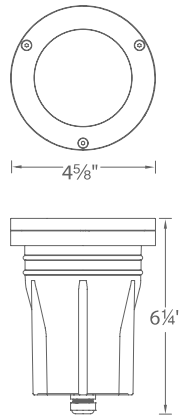


# 3" INGROUND 12V

5031

# WAC

## LANDSCAPE LIGHTING



Fixture Type:

Catalog Number:

Project: \_\_\_\_\_

Location: \_\_\_\_\_

### PRODUCT DESCRIPTION

Landscape Wall Wash luminaire

### FEATURES

- Tilttable and adjustable beam angle
- Integral dimmer
- IP67 rated, protected from temporary immersion under water
- Drive over up to 4500lbs
- Solid diecast brass or corrosion resistant aluminum
- Available concrete pour kit
- 6' lead wire and direct burial gel filled wire nuts included
- Maintains constant lumen output against voltage drop
- UL 1838 Listed
- Not suitable to use with external dimmers

### SPECIFICATIONS

**Input:** 9 - 15VAC (Transformer is required)  
**Power:** 2W to 12W / 2VA - 17VA  
**Brightness:** 70 lm to 505 lm  
**Beam Angle:** 15° to 60°  
**CRI:** 85  
**Rated Life:** 55,000 hours

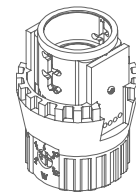
IEC safety Standard	Walk over	Drive over
Resistance to static load test	Yes (1125lbs)	Yes (4496lbs)
Resistance to torque and shear loads test	N/A	Yes

### ORDERING NUMBER

		Color Temp		Finish	
<b>5031</b>	3" Inground 12V	<b>27</b>	2700K	<b>BZ</b>	Bronze on Aluminum
		<b>30</b>	3000K	<b>BBR</b>	Bronze on Brass

### Module Replacement

2700K	<b>M5031LE-27BZ</b>
3000K	<b>M5031LE-30BZ</b>



**5031-**\_\_\_\_\_

Example: **5031-30BBR**

wacighting.com

Phone (800) 526.2588

Fax (800) 526.2585

Headquarters/Eastern Distribution Center

44 Harbor Park Drive

Port Washington, NY 11050

Central Distribution Center

1600 Distribution Ct

Lithia Springs, GA 30122

Western Distribution Center

1750 Archibald Avenue

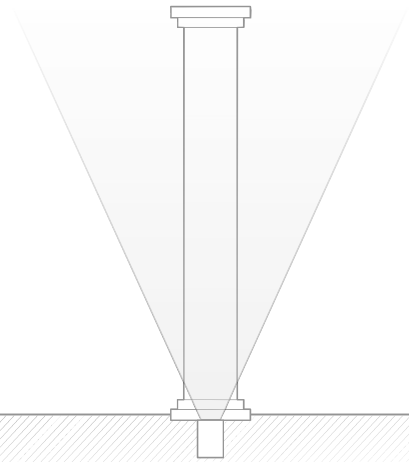
Ontario, CA 91760

# 3" INGROUND 12V

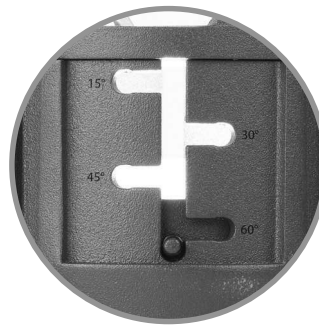
5031

# WAC

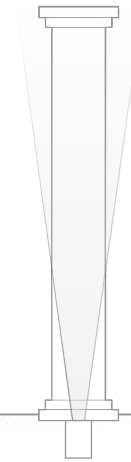
## LANDSCAPE LIGHTING



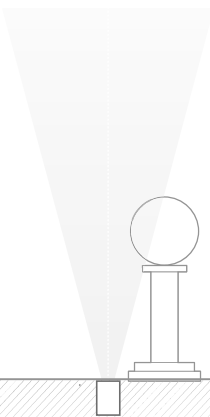
**Typical Inground**  
*Most light output goes into the air,  
causing light pollution*



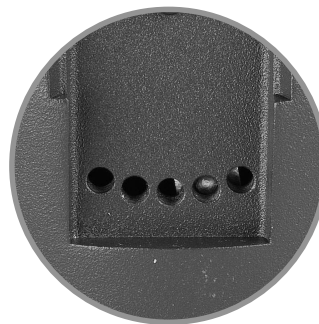
**Adjust Beam Angles**  
*Presets at  
15°, 30°, 45°, 60°*



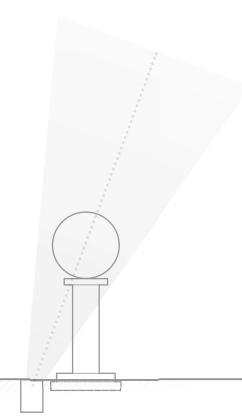
**Adjustable WAC Inground**  
*Adjust the light to where you need it*



**Typical Inground**  
*Most light output goes into the air,  
causing light pollution*



**Tilt and Aim**  
*Up to 40° of adjustability preset at  
-20°, -10°, 0°, 10°, 20°*



**Adjustable WAC Inground**  
*Adjust the light to where you need it*



**Control Brightness**  
*Adjustable from 70lm to 505lm  
Presets Comparable to  
10W, 25W, 35W, 50W, 75W Halogen source*



**wacighting.com**  
Phone (800) 526.2588  
Fax (800) 526.2585

**Headquarters/Eastern Distribution Center**  
44 Harbor Park Drive  
Port Washington, NY 11050

**Central Distribution Center**  
1600 Distribution Ct  
Lithia Springs, GA 30122

**Western Distribution Center**  
1750 Archibald Avenue  
Ontario, CA 91760

# 3" INGROUND 12V

5031

# WAC

## LANDSCAPE LIGHTING

### Rock Guard

*Protects the fixture face*



**5030-GRD-BZ**  
*Bronze on Aluminum*

**5030-GRD-BBR**  
*Bronze on Brass*

### Optics

*Enhances saturation of florals and foliage*



**LENS-25-AMB**  
*Amber*

**LENS-25-RED**  
*Red*

**LENS-25-FR**  
*Frosted*

**LENS-25-GRN**  
*Green*

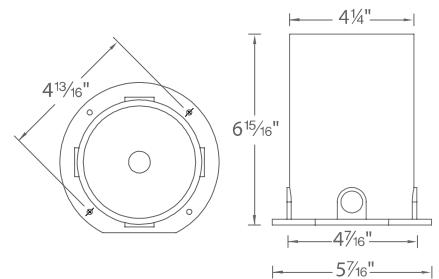
**LENS-25-BLU**  
*Blue*

**LENS-25-HCL**  
*Honeycomb Louver*  
*Reduces glare*

### Concrete Pour Kit

*For installation in concrete*  
*Five 1/2" NPT threaded holes, PC*

**5030-PIP-PVC**  
*Shown with temporary dense foam cap*



### Magnetic Transformers

*Stainless Steel, 12-15V output, IP65 rated, UL 1838 listed*  
*See transformer spec sheet for details and its accessories*

**9075-TRN-SS**  
*75W Max*

**9150-TRN-SS**  
*150W Max*

**9300-TRN-SS**  
*300W Max*

**9600-TRN-SS**  
*600W Max*



wacighting.com  
Phone (800) 526.2588  
Fax (800) 526.2585

Headquarters/Eastern Distribution Center  
44 Harbor Park Drive  
Port Washington, NY 11050

Central Distribution Center  
1600 Distribution Ct  
Lithia Springs, GA 30122

Western Distribution Center  
1750 Archibald Avenue  
Ontario, CA 91760