



# HYBRID 365

LED SOLAR AREA LIGHT  
COMPARES TO 250W HID

## FREE TO SHINE

NEW! Solera Solar Lighting Hybrid 365 introduces game-changing technology to leverage both solar and line voltage to power bright LED area lights, all night - every night. Hybrid 365 has an intelligent control module that knows to switch from cost-free solar power to line voltage only when the battery is depleted. Solera Solar Lighting's unique all-in-one design delivers high performance, ease of installation and adjustability – unlike any other solar lighting.

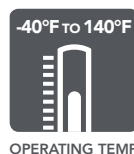


- Hybrid 365 area light switches from cost-free solar to line voltage, only when the long-lasting battery is depleted
- All-in-one design
- Exclusive long-lasting battery withstands extreme temperatures
- Easy to install and operate
- Adjustable solar panel — multiple mounting and lens types available
- Infrared Remote Control to adjust brightness
- Slip-fitter bracket included with fixture
- Power Dimming: Continuous from 20% to 100% output power, more that 100 steps adjustment
- Fixture Operating Temperature Range = -40°F to 140°F  
Battery Charging Temperature Range = -4°F to 140°F



PART #	UPC	COMPARABLE TO	WATTAGE**	LUMENS	CCT	EPA
SL-SAL-HYB-30W-40K-SF-YY-G1	844006051051	250W	30W	5900	4000K	4.45

\* YY = Body color, BK : black...etc  
\*\* Grid power uses 45W



[solera-solar.com](http://solera-solar.com) • 847.380.3540

LIGHT EFFICIENT DESIGN HEADQUARTERS 188 S. Northwest Highway • Cary, IL 60013  
INNOVATION & MANUFACTURING CENTER 30 Log Bridge Road, Building 200 • Middleton, MA 01949  
847.380.3540 • led-llc.com

03.22.21 Information is subject to change without notice.



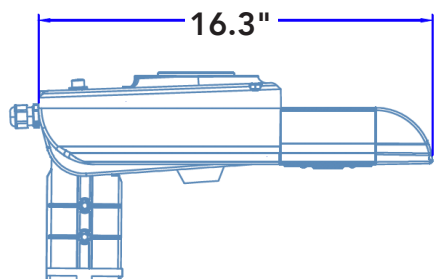


FREE TO SHINE

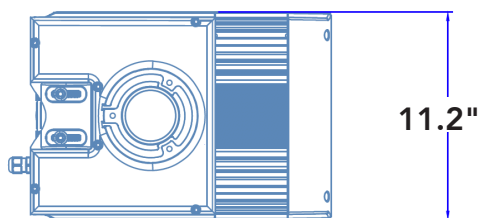
# HYBRID 365

LED SOLAR AREA LIGHT  
COMPARES TO 250W HID

Fixture Side View

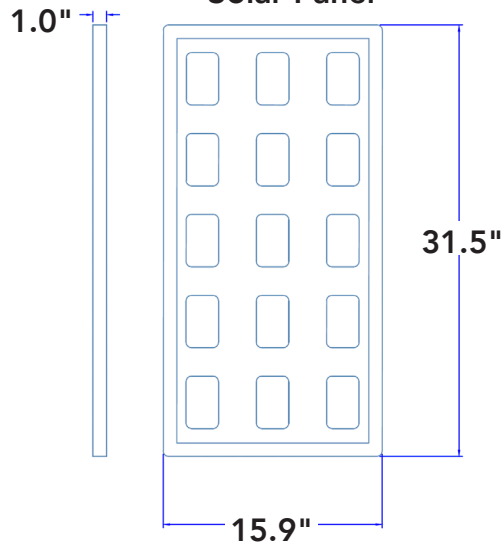


Fixture Top View



(Total fixture weight = 30lbs)

Solar Panel



ADDITIONAL BRACKETS MUST BE PURCHASED SEPARATELY (SLIP-FITTER BRACKET INCLUDED WITH FIXTURE)

ADDITIONAL BRACKETS & ACCESSORIES	REMPHOS PART #	DESCRIPTION
	SL-SAL-HYB-BKT-30W-RP-G1	Round pole bracket
	SL-SAL-HYB-BKT-30W-SP-G1	Square pole bracket
	SL-SAL-HYB-BKT-30W-TN-3-G1	3" square tenon bracket
	SL-SAL-HYB-BKT-30W-RT-3-G1	3" round tenon bracket
	SL-SAL-HYB-BKT-30W-WM-G1	Wall mount bracket



SL-SAL-HYB-BKT-30W-RP-G1



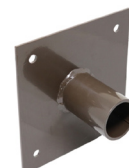
SL-SAL-HYB-BKT-30W-SP-G1



SL-SAL-HYB-BKT-30W-TN-3-G1



SL-SAL-HYB-BKT-30W-RT-3-G1



SL-SAL-HYB-BKT-30W-WM-G1

- **Default Setting - No Adjustments Necessary**

The default setting is Dusk 'till Dawn @ 80% first 2 hours, 50% constant & 80% w/ motion for the rest of the night.



FREE TO SHINE

# HYBRID 365

LED SOLAR AREA LIGHT  
COMPARES TO 250W HID

## Save with Solera Solar Lighting™ Hybrid 365

Innovative Solera Solar Lighting Hybrid 365 area lights reduce your reliance on the high cost power grid. Our exclusive intelligent control model minimizes use of line voltage to only when the long-lasting solar battery is depleted. Hybrid 365 is an economic and sustainable solution that substitutes free solar energy for line voltage during peak demand times such as summer days. **See examples below of potential annual savings with Solera Solar Lighting Hybrid 365 area lights.**

### Estimated Annual Energy Savings With Solera Solar Lighting™ Hybrid 365 Area Lights\*

	Annual Cost to Operate HYBRID 365 30W Line Voltage	Annual Cost to Operate HID 250W Line Voltage	ESTIMATED ANNUAL ENERGY SAVINGS		
			1 Area Light	x25 Area Lights	x100 Area Lights
Boston, MA	\$6.32	\$203.09	\$196.77	\$4,919.25	\$19,677.00
New York, NY	\$4.60	\$163.75	\$159.15	\$3,978.75	\$15,915.00
Montreal, Quebec CAN	\$6.49	\$188.35	\$181.86	\$4,546.50	\$18,186.00
Nashville, TN	\$2.79	\$107.45	\$104.67	\$2,616.75	\$10,467.00
Miami, FL	\$1.63	\$119.18	\$117.55	\$2,938.75	\$11,755.00
Chicago, IL	\$4.17	\$105.43	\$101.26	\$2,531.50	\$10,126.00
Portland, OR	\$2.73	\$95.80	\$93.07	\$2,326.75	\$9,307.00
Santa Maria, CA	\$1.73	\$186.60	\$184.88	\$4,622.00	\$18,488.00

\*Assumes default setting of Dusk 'till Dawn @ 80% first 2 hours, 50% constant & 80% w/ motion detected for the rest of the night. Area lights are fully programmable to adjust setting. Sources for Calculations: **Peak Sun Hours or Solar Radiation information** <https://www.nrel.gov/gis/solar.html>, **Sunrise and Sunset Times** <https://www.timeanddate.com/astronomy/usa>, **Line Voltage Costs (cents/kWh)** <https://www.eia.gov/electricity/state/>

### Solera Solar Lighting™ Hybrid 365 Solar Energy Use\*\* by Season

	Summer	Winter	Spring/Fall	Annual
Boston, MA	71%	35%	64%	57%
New York, NY	82%	36%	68%	62%
Montreal, Quebec CAN	72%	26%	61%	53%
Nashville, TN	83%	38%	71%	64%
Miami, FL	94%	63%	85%	81%
Chicago, IL	68%	17%	53%	46%
Portland, OR	98%	22%	70%	63%
Santa Maria, CA	100%	66%	82%	83%

\*\*Average annual percentage of time in use based on: **Peak Sun Hours or Solar Radiation information** <https://www.nrel.gov/gis/solar.html>, **Sunrise and Sunset Times** <https://www.timeanddate.com/astronomy/usa>. Balance of percentage of time is powered by line voltage.



# HYBRID 365

LED SOLAR AREA LIGHT  
COMPARES TO 250W HID

FREE TO SHINE

## PART NUMBER BUILDER

MFR	PRODUCT	TYPE	WATTAGE	COLOR	FUNCTION	BODY COLOR	VOLTAGE	GEN	LENSE
SL	SAL	HYB	30W	XX	SF	YY		G1	
				-30K=3000K -40K=4000K -50K=5000K		-BK=Black	-(HV)		T2=TYPE 2 LENS T3=TYPE 3 LENS T4=TYPE 4 LENS T5=TYPE 5 LENS

## ORDERING GUIDE

	30W HYBRID 120-277V	30W HYBRID HIGH VOLTAGE 480V (HV)
DEFAULT	SL-SAL-HYB-30W-40K-SF-BK-G1	
CUSTOM COLOR TEMPERATURES	SL-SAL-HYB-30W-30K-SF-BK-G1	
	SL-SAL-HYB-30W-50K-SF-BK-G1	
3000K CUSTOM OPTICS	SL-SAL-HYB-30W-30K-SF-BK-G1-T2	SL-SAL-HYB-30W-30K-SF-BK-HV-G1-T2
	SL-SAL-HYB-30W-30K-SF-BK-G1-T3	SL-SAL-HYB-30W-30K-SF-BK-HV-G1-T3
	SL-SAL-HYB-30W-30K-SF-BK-G1-T4	SL-SAL-HYB-30W-30K-SF-BK-HV-G1-T4
	SL-SAL-HYB-30W-30K-SF-BK-G1-T5	SL-SAL-HYB-30W-30K-SF-BK-HV-G1-T5
4000K CUSTOM OPTICS	SL-SAL-HYB-30W-40K-SF-BK-G1-T2	SL-SAL-HYB-30W-40K-SF-BK-HV-G1-T2
	SL-SAL-HYB-30W-40K-SF-BK-G1-T3	SL-SAL-HYB-30W-40K-SF-BK-HV-G1-T3
	SL-SAL-HYB-30W-40K-SF-BK-G1-T4	SL-SAL-HYB-30W-40K-SF-BK-HV-G1-T4
	SL-SAL-HYB-30W-40K-SF-BK-G1-T5	SL-SAL-HYB-30W-40K-SF-BK-HV-G1-T5
5000K CUSTOM OPTICS	SL-SAL-HYB-30W-50K-SF-BK-G1-T2	SL-SAL-HYB-30W-50K-SF-BK-HV-G1-T2
	SL-SAL-HYB-30W-50K-SF-BK-G1-T3	SL-SAL-HYB-30W-50K-SF-BK-HV-G1-T3
	SL-SAL-HYB-30W-50K-SF-BK-G1-T4	SL-SAL-HYB-30W-50K-SF-BK-HV-G1-T4
	SL-SAL-HYB-30W-50K-SF-BK-G1-T5	SL-SAL-HYB-30W-50K-SF-BK-HV-G1-T5

\*Custom orders will be fulfilled at our Innovation and Manufacturing Center in Middleton, MA.  
(Lead time is 1-2 weeks)