

# Model: WL-LED300

## LEDme® Step Light

# WAC LIGHTING

Responsible Lighting®



Fixture Type:

Catalog Number:

Project: \_\_\_\_\_

Location: \_\_\_\_\_

### PRODUCT DESCRIPTION

Circular scoop LEDme® Step Light. Designed for safety and style on stairways, patios, decks, balcony areas, walkways and building perimeters. Features an architectural design. Energy efficient for long-lasting indoor and outdoor lighting solutions. Creates an attractive, romantic impression at night. Colored lights can be used for way finding.

### FEATURES

- Direct wiring, no driver needed
- Low profile, flush to wall aesthetics with no visible hardware
- 40,000 hour rated life
- Title 24 Compliant
- Balanced lighting, free of shadows with minimum glare
- Up to 200 fixtures can be connected in parallel
- 5 year WAC Lighting product warranty

### ORDER NUMBER

Model	Light Color	Finish	Lumens
WL-LED300 120V	C White	BN* Brushed Nickel	30
		BZ Bronze	33
		WT White	74
	AM Amber	BN* Brushed Nickel	19
		BZ Bronze	21
		WT White	38
	RD Red	BN* Brushed Nickel	2
		BZ Bronze	2
		WT White	4
	BL Blue	BN* Brushed Nickel	3
		BZ Bronze	4
		WT White	8

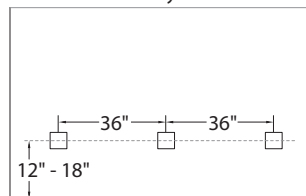
\*Brushed Nickel Finish is for interior use only

**WL-LED300** -  -

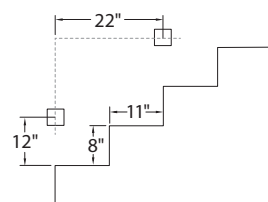
Example: WL-LED300-C-WT

### SPACING RECOMMENDATIONS FOR OPTIMAL LIGHT DISTRIBUTION

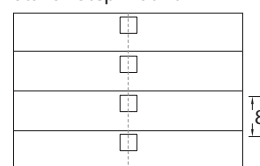
#### Corridors / Hallways



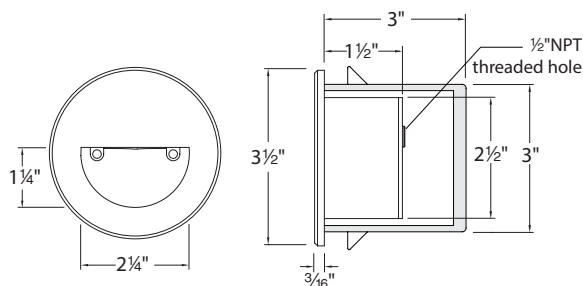
#### Stairs - Wall Mount



#### Stairs - Step Mount



Mount in center of stair as close to the upper tread as possible. For best results use one light per step for steps narrower than 5'.



### SPECIFICATIONS

**Construction:** Die-cast aluminum

**Power:** Direct wiring, no remote driver needed  
Input voltage: 120VAC 50/60Hz

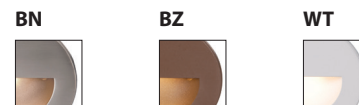
**Light Source:** 3000K CCT Samsung HV-AC High Power LED, CRI: 85  
Total power consumption of 3.9W

**Mounting:** Supplied with junction box for recessed installation

**Dimming:** Dim to 10% with electronic low voltage (ELV) dimmer  
Approved dimmers: Lutron Nova-T NTELV-300 & NTELV-600, Lutron Vietri VTELV-600, Lutron Diva DVELV-300P, Lutron Skylark SELV-300P, Lutron Maestro MAELV-600

**Standards:** IP66, UL & cUL Listed for wet locations, Title 24 Compliant

### FINISHES



wacighting.com  
Phone (800) 526.2588  
Fax (800) 526.2585

Headquarters/Eastern Distribution Center  
44 Harbor Park Drive  
Port Washington, NY 11050

Central Distribution Center  
1600 Distribution Ct  
Lithia Springs, GA 30122

Western Distribution Center  
1750 Archibald Avenue  
Ontario, CA 91760