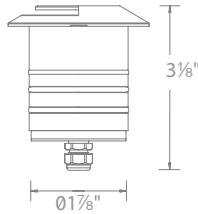
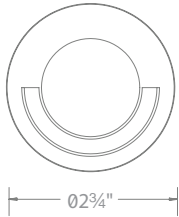
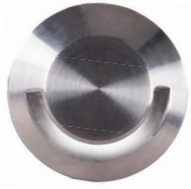


2" INGROUND SINGLE APERTURE

2091

WAC

LANDSCAPE LIGHTING



Fixture Type:

Catalog Number:

Project: _____

Location: _____

PRODUCT DESCRIPTION

Landscape 2" recessed in-ground luminaire washes walkways with a shadow-free smooth illumination.

FEATURES

- Factory sealed water tight fixtures
- Cold Weather Start: -40°C to 50°C
- Solid stainless steel construction
- Available Concrete Pour Adapter
- Spring clip, 6' lead wire and direct burial gel filled wire nuts included

SPECIFICATIONS

Input: 9 - 15VAC (Transformer is required)
Power: 4.1W / 6.6VA
Brightness: 5 lm
Color Temp: 2700K
CRI: 85
Rated Life: 70,000 hours

ORDERING NUMBER

Color Temp		Finish	
2091-27	2700K	BS	<i>Bronzed Stainless Steel</i>
		SS	<i>Stainless Steel</i>

2091-27 _____

Example: **2091-30SS**

IEC safety Standard	Walk over	Drive over
Resistance to static load test	Yes (1125lbs)	Yes (4496lbs)
Resistance to torque and shear loads test	N/A	Yes

wacighting.com
 Phone (800) 526.2588
 Fax (800) 526.2585

Headquarters/Eastern Distribution Center
 44 Harbor Park Drive
 Port Washington, NY 11050

Central Distribution Center
 1600 Distribution Ct
 Lithia Springs, GA 30122

Western Distribution Center
 1750 Archibald Avenue
 Ontario, CA 91760

2" INGROUND SINGLE APERTURE

2091

WAC

LANDSCAPE LIGHTING

Magnetic Transformers



Stainless Steel, 12-15V output,
IP65 rated, UL 1838 listed
See transformer spec sheet for
details and its accessories

9075-TRN-SS
75W Max

9150-TRN-SS
150W Max

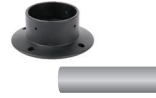
9300-TRN-SS
300W Max

9600-TRN-SS
600W Max

2" Concrete Pour Kit

Order complete kit

Order components separately



2000-CON-PVC
Concrete Pour Kit



2000-PC-B
Concrete Pour Base



2000-PVC-P
Concrete Pour Pipe
Schedule 40 PVC

For installation in concrete.
Use with a 4" outdoor rated junction box

TESTED MAGNETIC LOW VOLTAGE (MLV) DIMMERS

Luminaire	Dimmer					
	Manufacturer	Family	Model	Power Rating	Range*	Note
2091	Lutron	Diva	DVLV-600	600W	20% - 100%	
		Skylark	SLV-600P	600W	15% - 100%	Best performance
		Skylark	S-10P	1000W		Not recommended

*Low end of this range is determined by output current which may not directly translate to the perceived light output

WAC Lighting fixtures are compatible with a variety of dimmers. For your convenience we have included a compatibility chart showing dimmers which have been tested with our products. The recommended list below is based upon testing conducted in a lab, and the results can vary in certain field applications due to a number of factors. Exclusion from the list does not imply incompatibility, just that it has not been tested by WAC Lighting. Please reference the dimmer manufacturer's instructions for installation, or contact a WAC lighting professional at 800-526-2588.

waclighting.com
Phone (800) 526.2588
Fax (800) 526.2585

Headquarters/Eastern Distribution Center
44 Harbor Park Drive
Port Washington, NY 11050

Central Distribution Center
1600 Distribution Ct
Lithia Springs, GA 30122

Western Distribution Center
1750 Archibald Avenue
Ontario, CA 91760