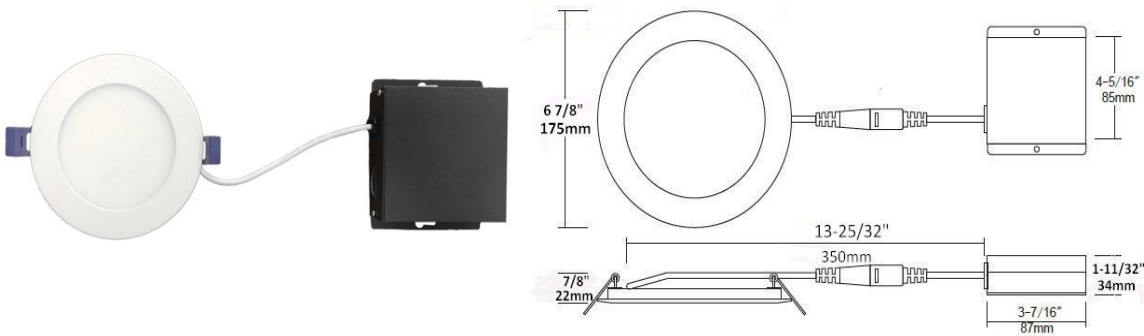




9239 Shaughnessy Street, Vancouver
 BC V6P 6R5 Canada
 Website: www.syncotech.ca
 Email: sales@syncotech.ca
 Phone: 778-960-4966

6" Round Led Slim Panel Light

Model No.: SSL-6-3K / SSL-6-4K / SSL-6-5K

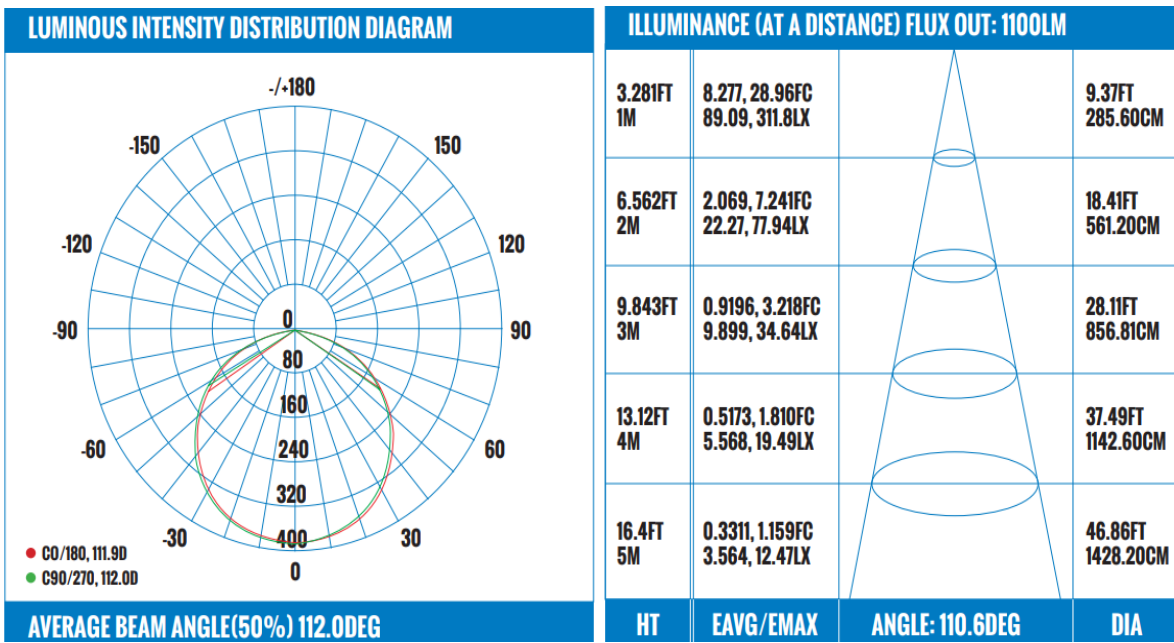


SPECIFICATION:

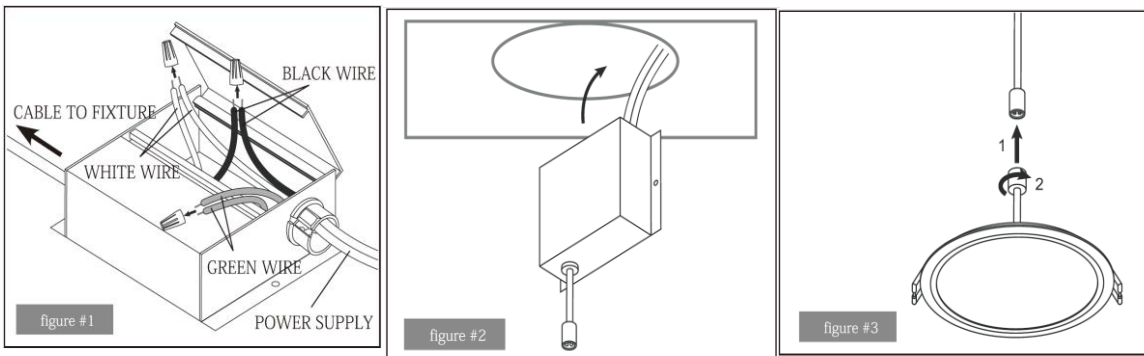
- Input Voltage: AC 120V
- Wattage: 12W
- Lumens: 1100lm
- CCT: 3000K / 4000K / 5000K
- CRI: Ra>80
- Power Frequency: 50~60HZ
- Beam Angle: 120°
- Operating Temperature: -20°C ~40°C
- Dimmable: Yes (Triac)
- Harmonic Distortion: <2%
- Lifespan / Warranty: 50,000hrs / 5 years
- Lens: PMMA
- Certification: cETLus & Energy star
- Durable airtight die-cast aluminum body
- Aluminum Junction Box



LUMINAIRE PHOTOMETRIC



INSTALLATION



ACCESSORIES:



A-SMP6
6¼ " Round pre-mounting plate for led slim panel light



A-EC72
Extension Cord for led slim panle light 72"=6FT



A-NCMP6
6¼ " New Construction Round pre-mounting plate for led slim panel light



A-EC120
Extension Cord for led slim panle light 120"=10FT